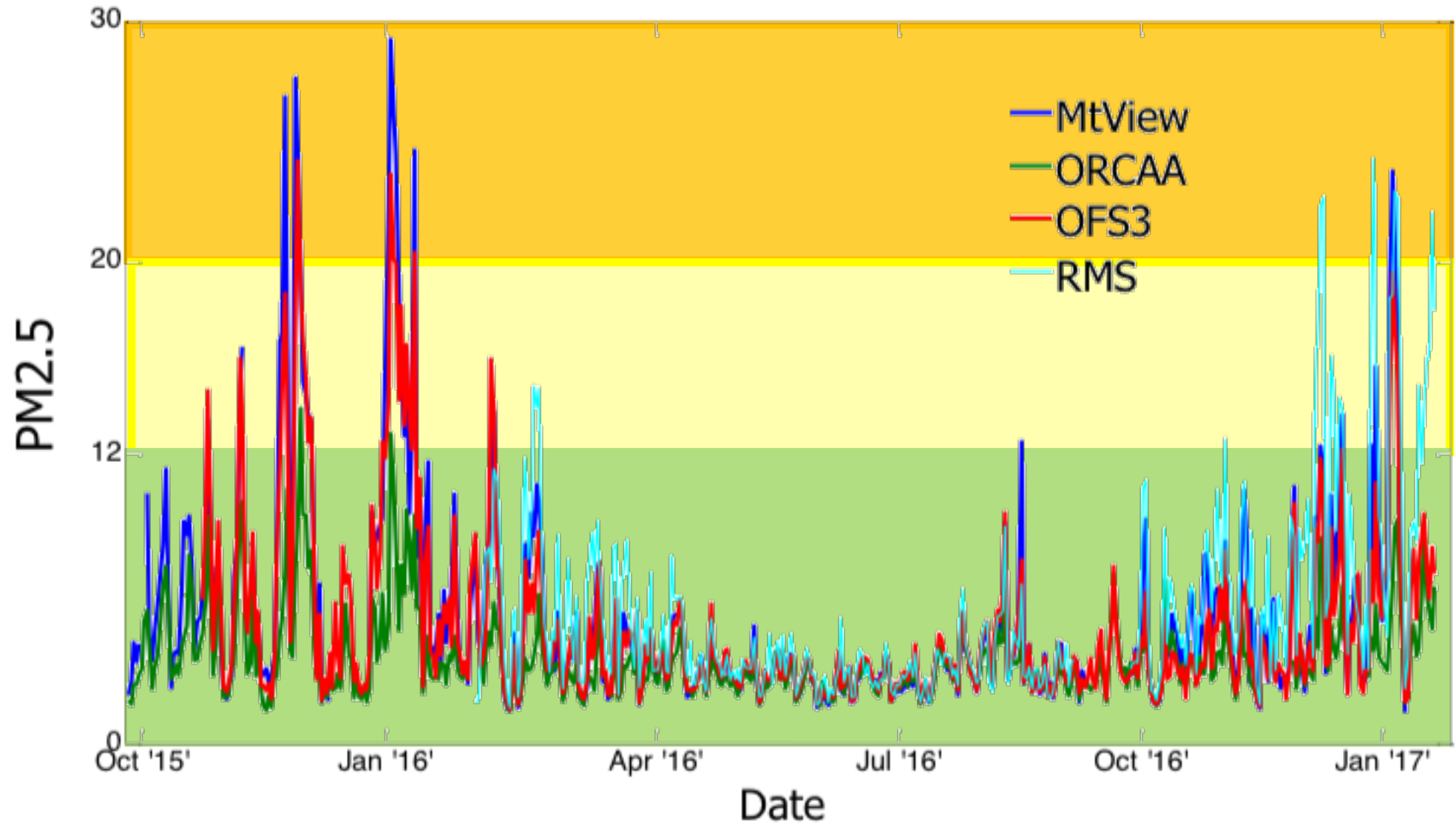
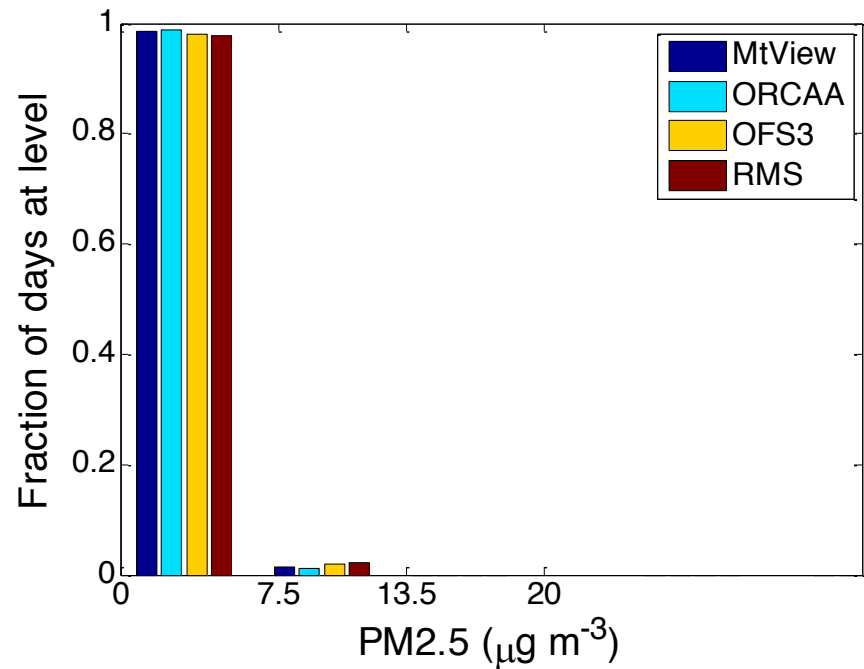
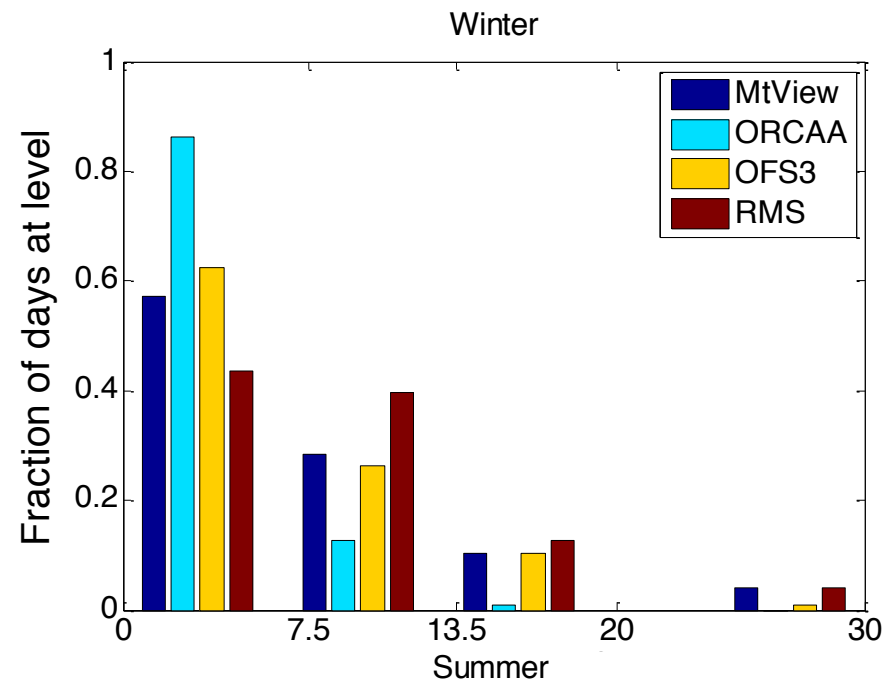
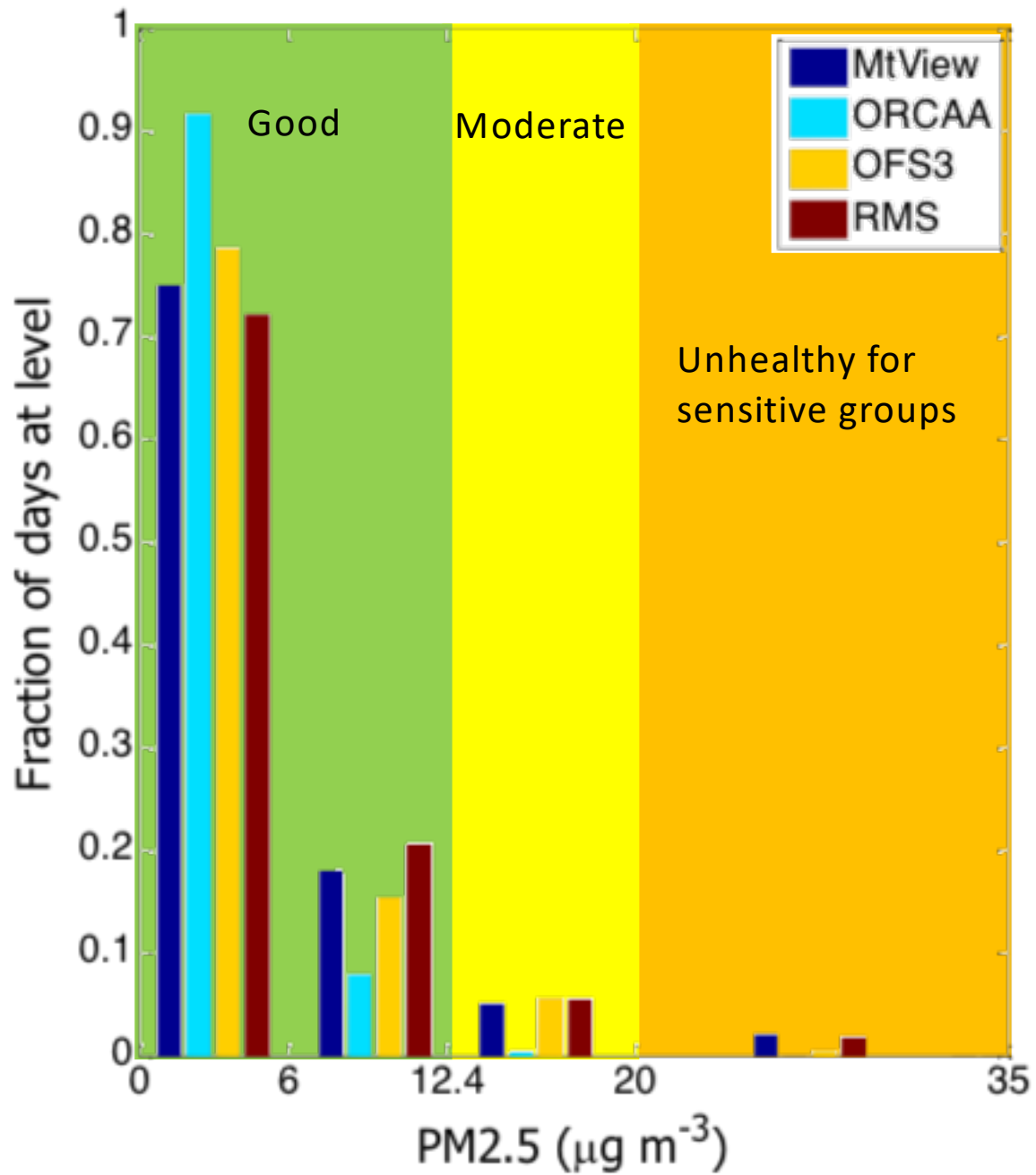


Thurston County Saturation Study

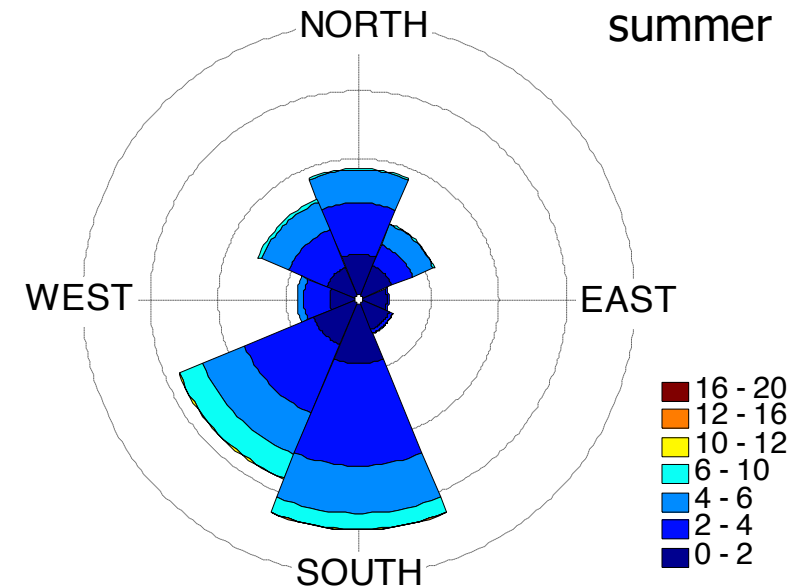
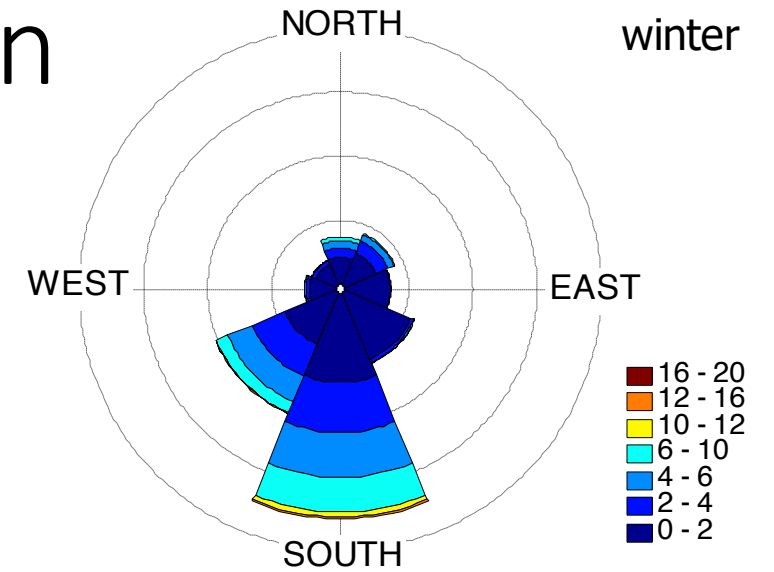
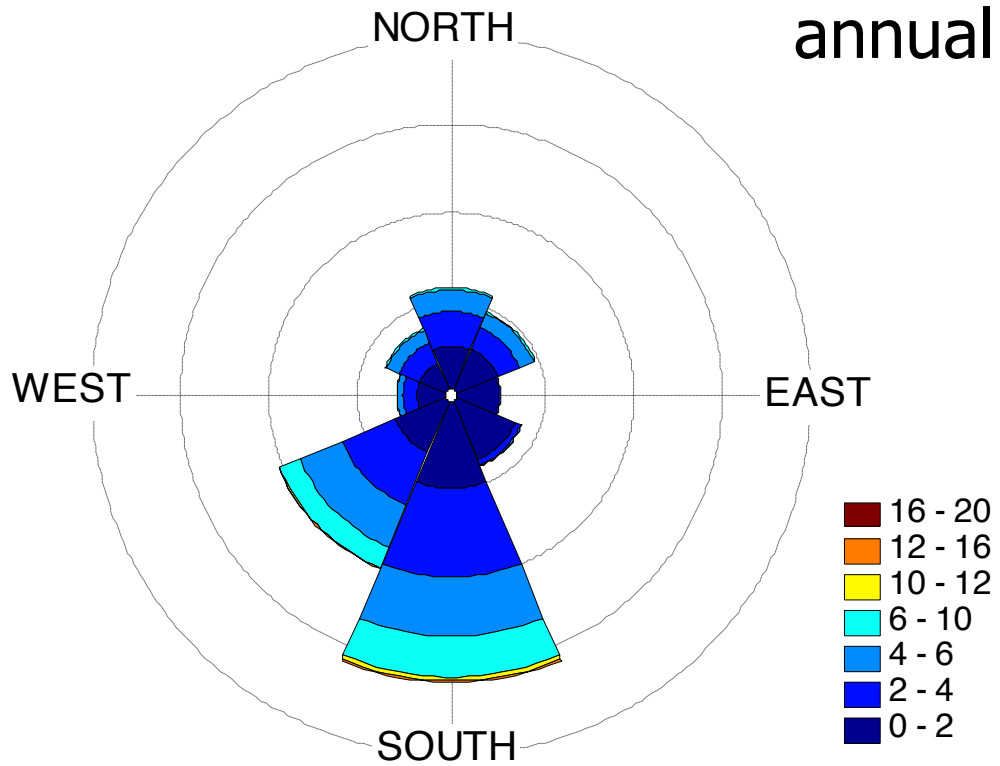
October 2015 – January 2017

Time series of daily averaged PM2.5 at all sites



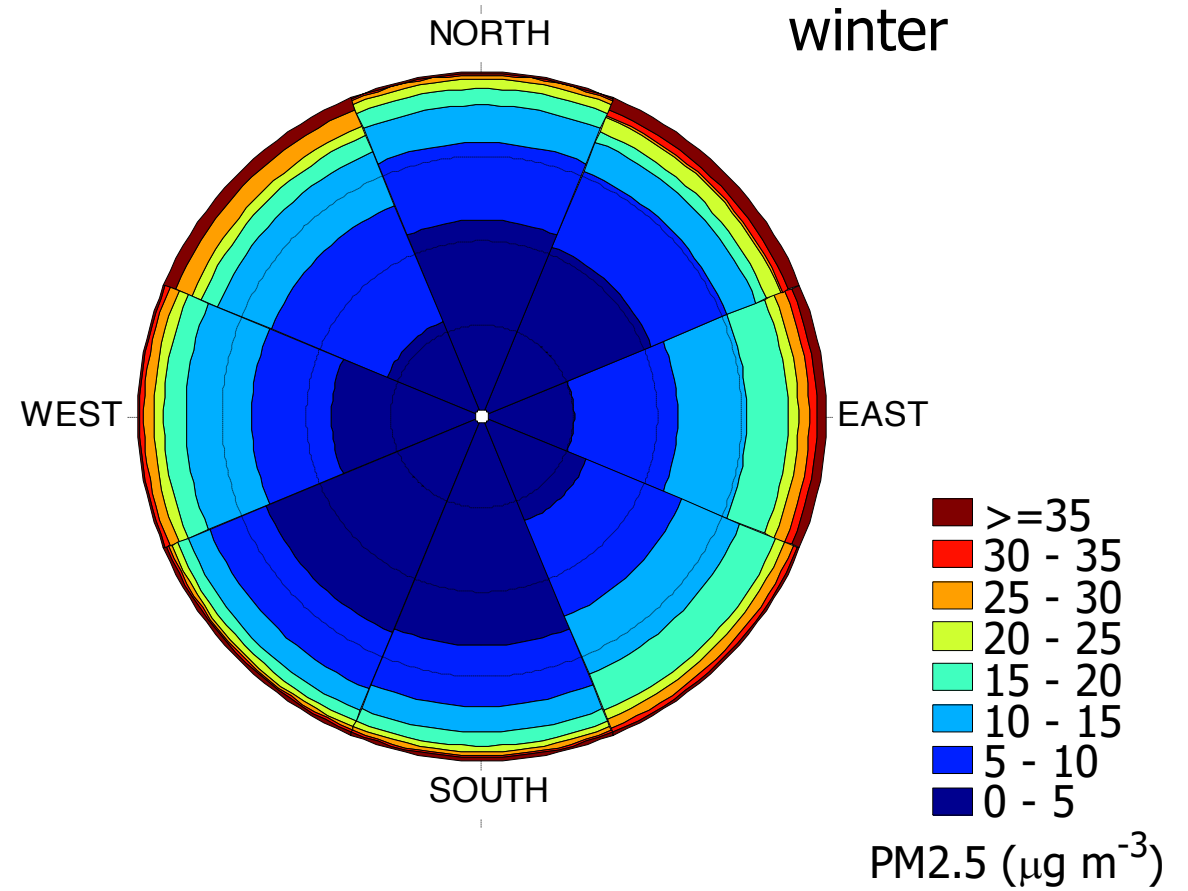
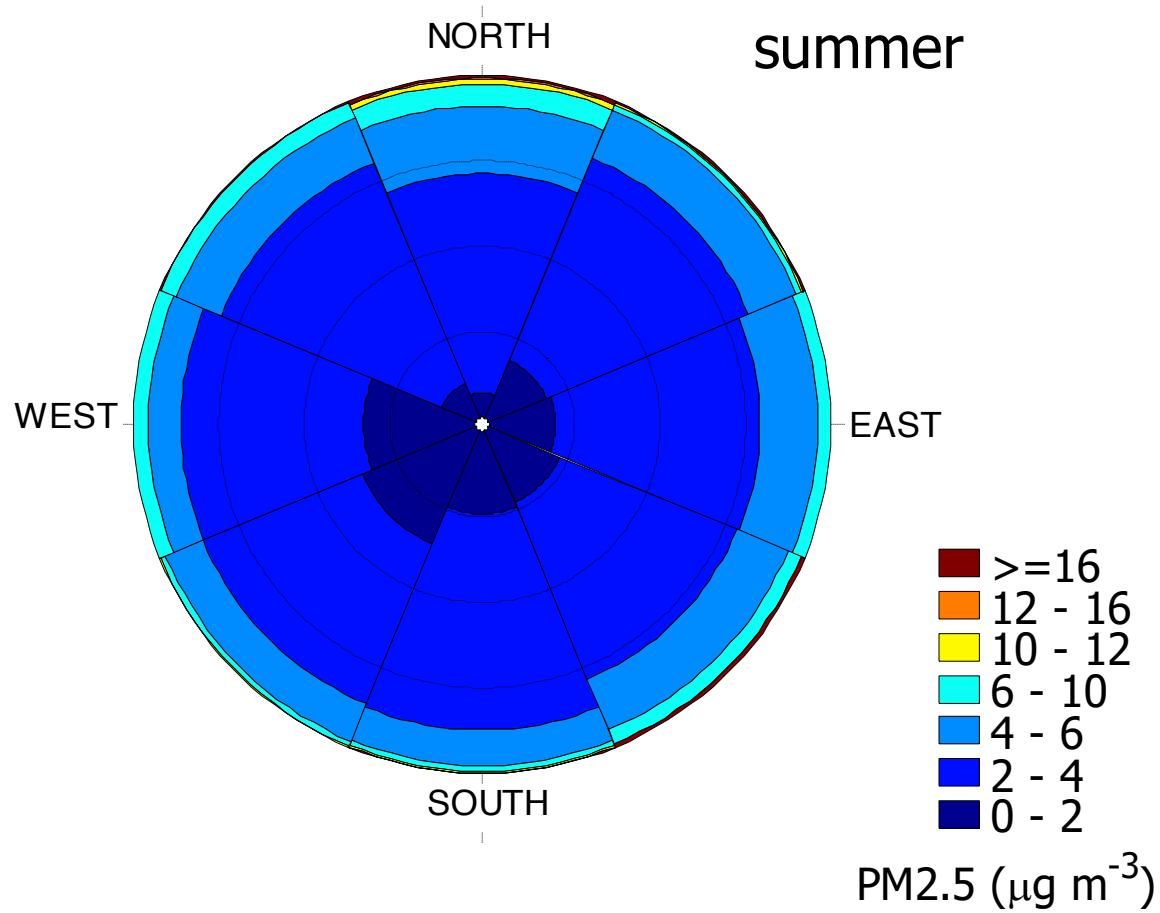


Seasonal wind speed and direction

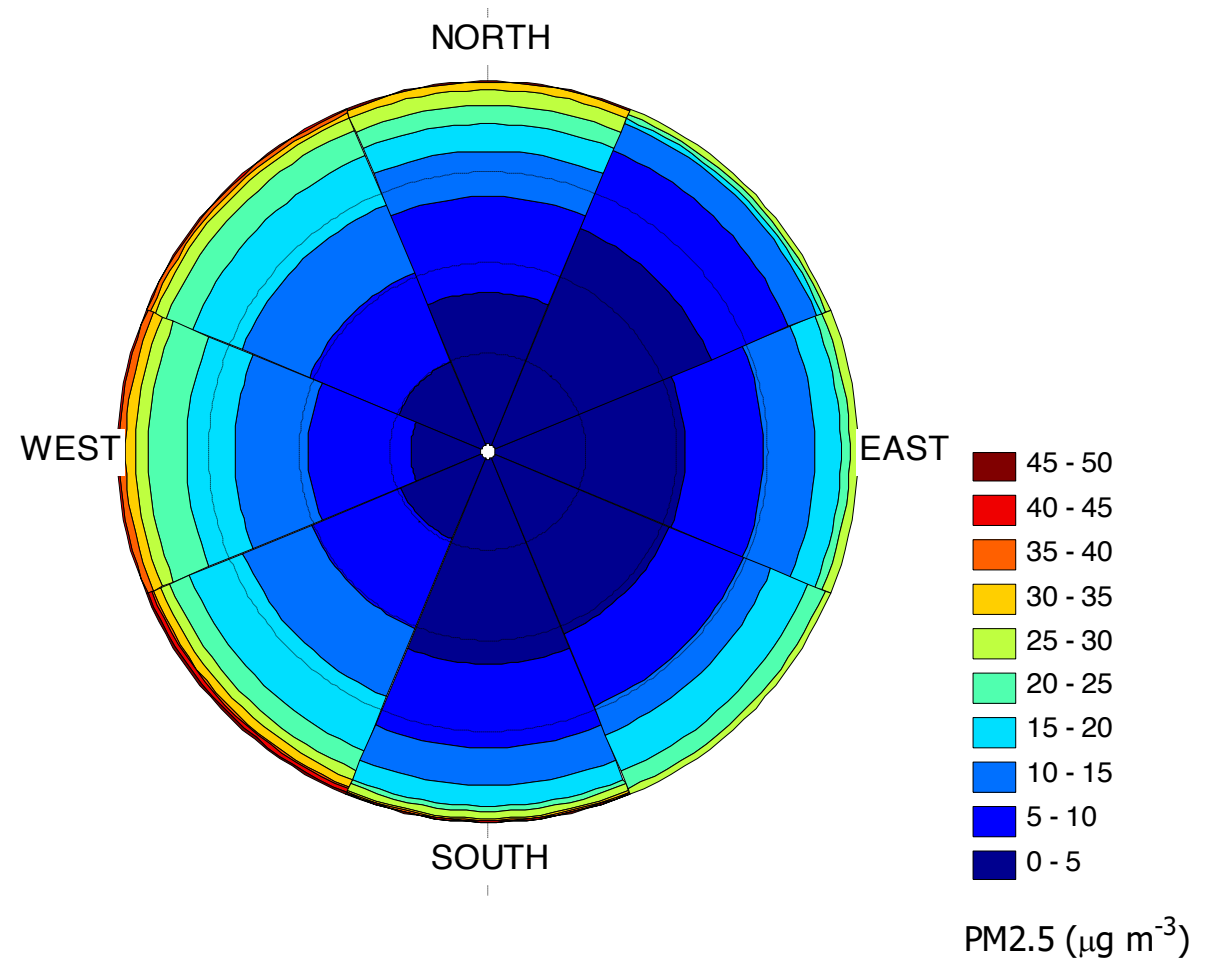
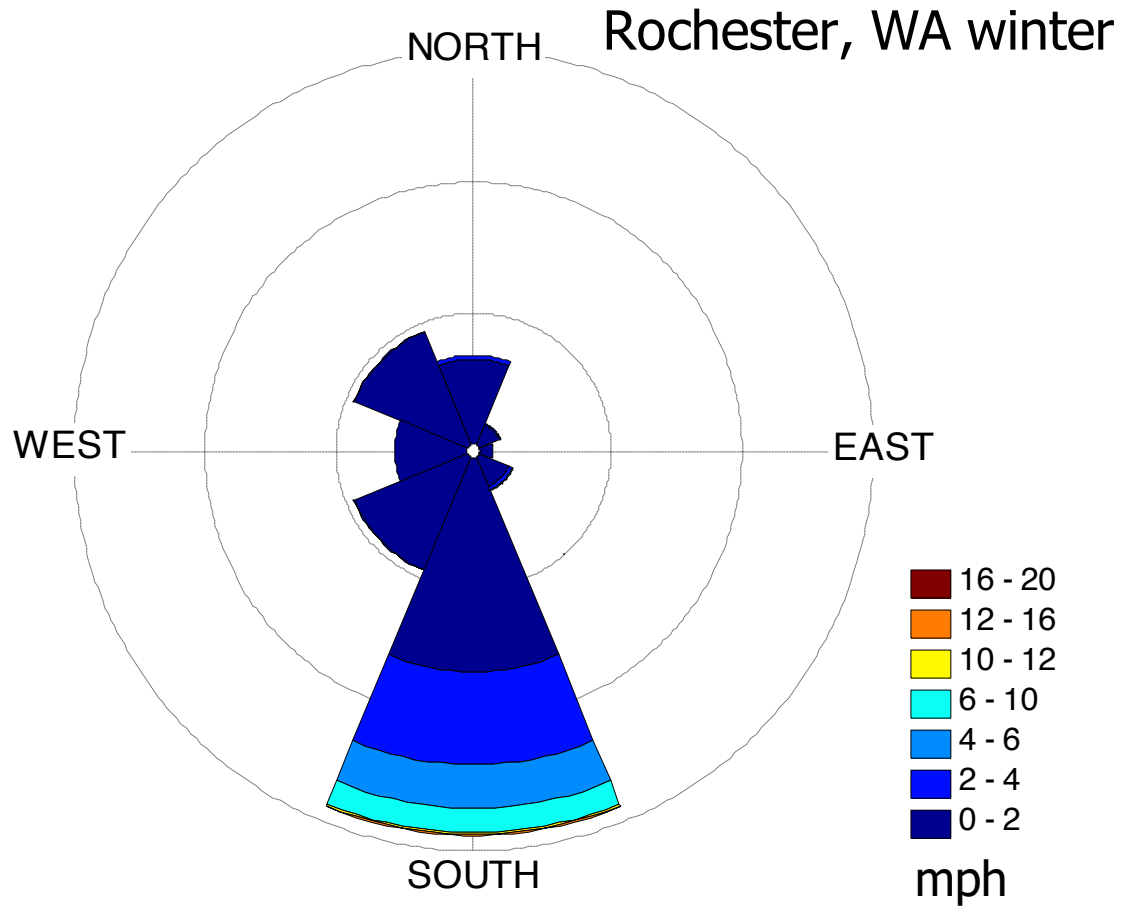


Data from Mt. View Elementary in Lacey

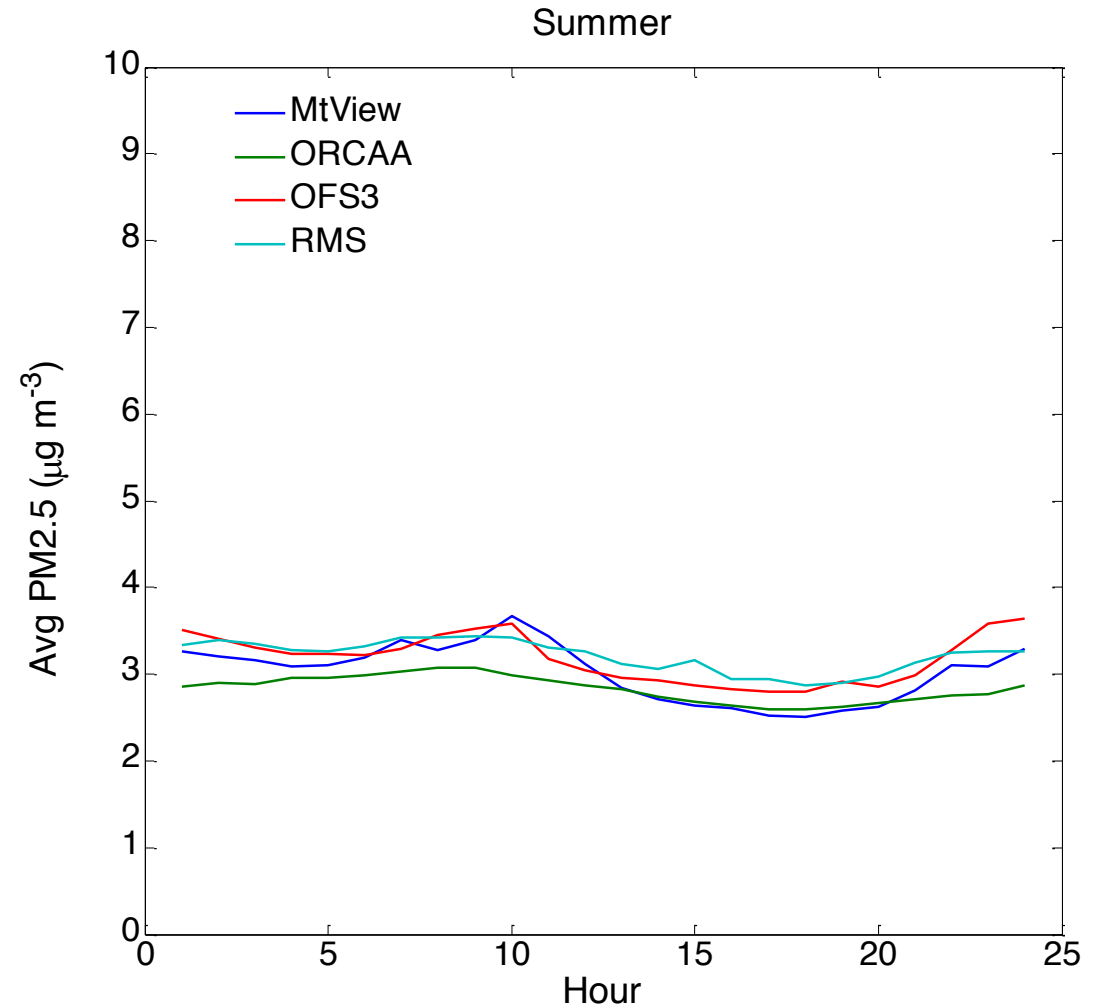
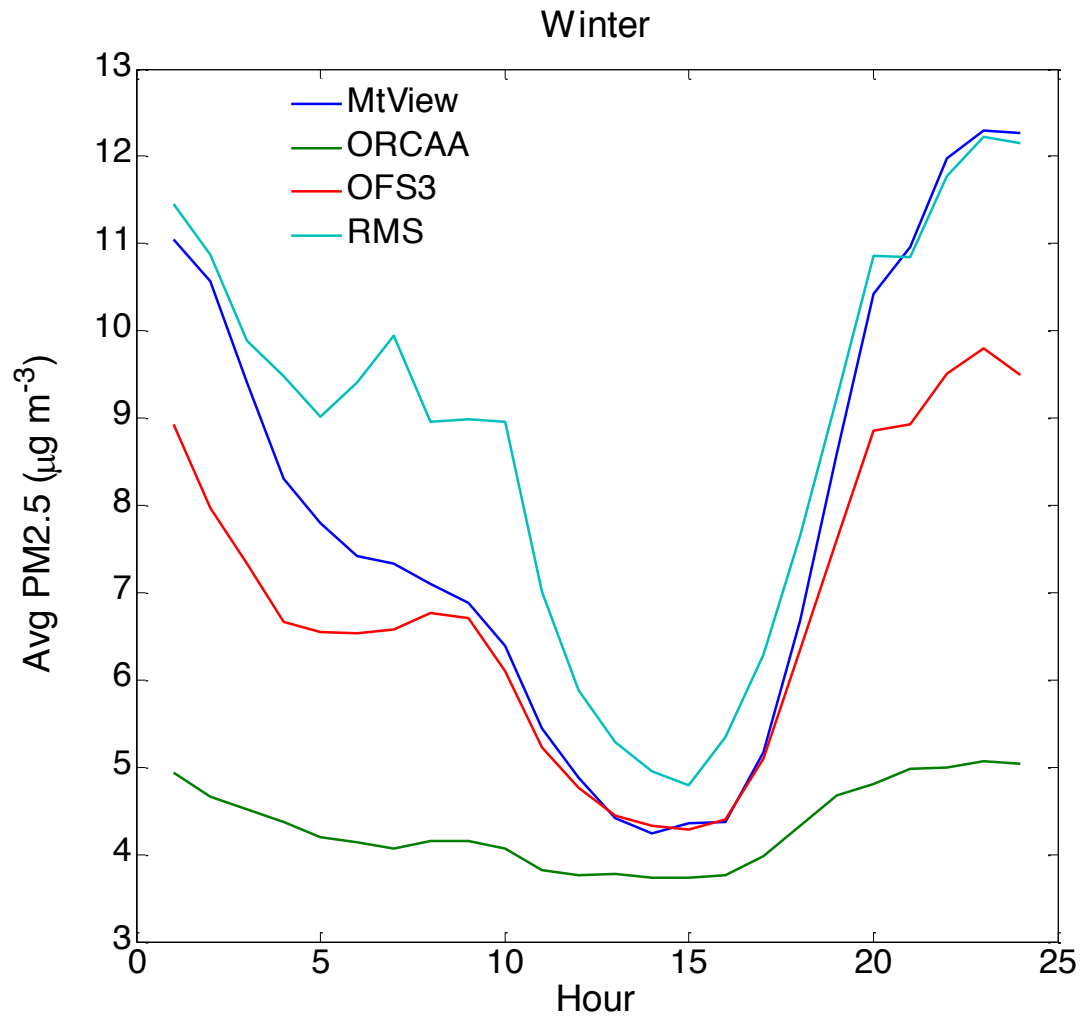
PM2.5 dependence on Wind Direction



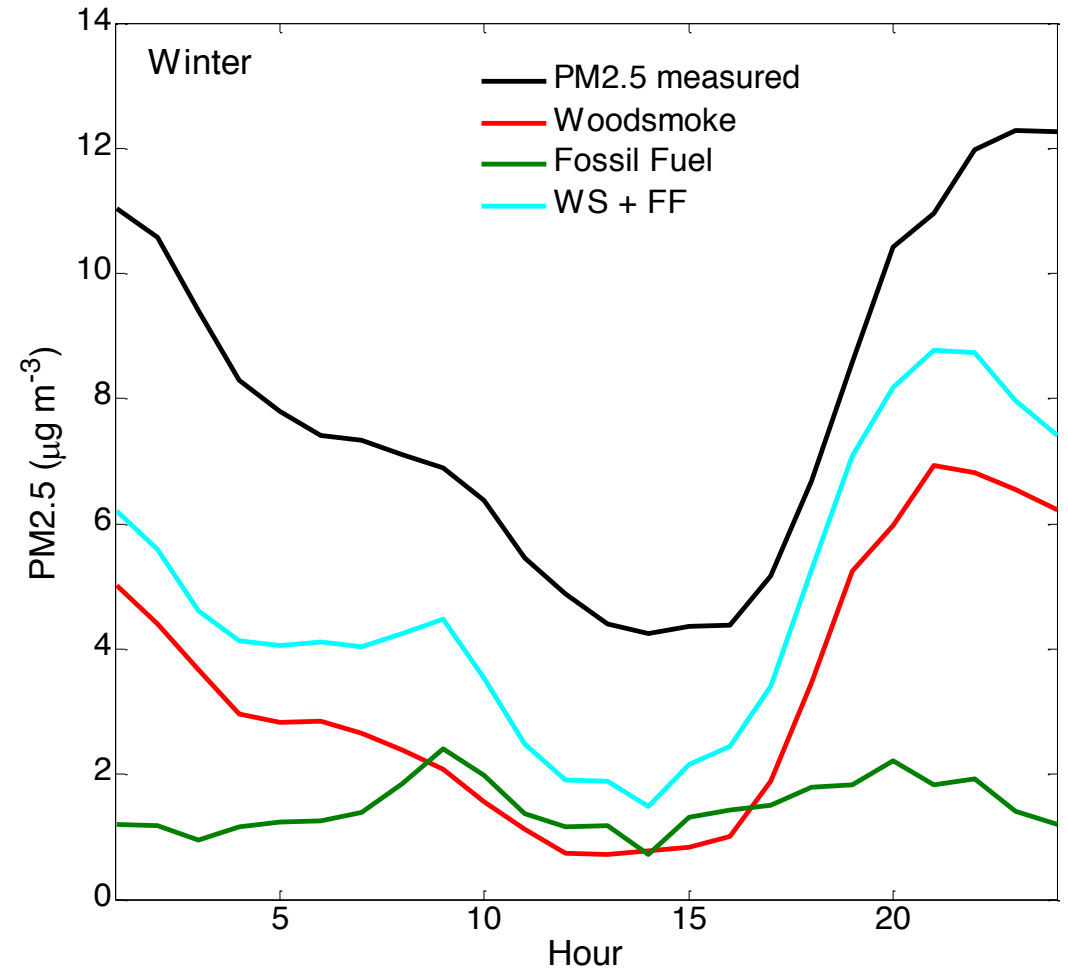
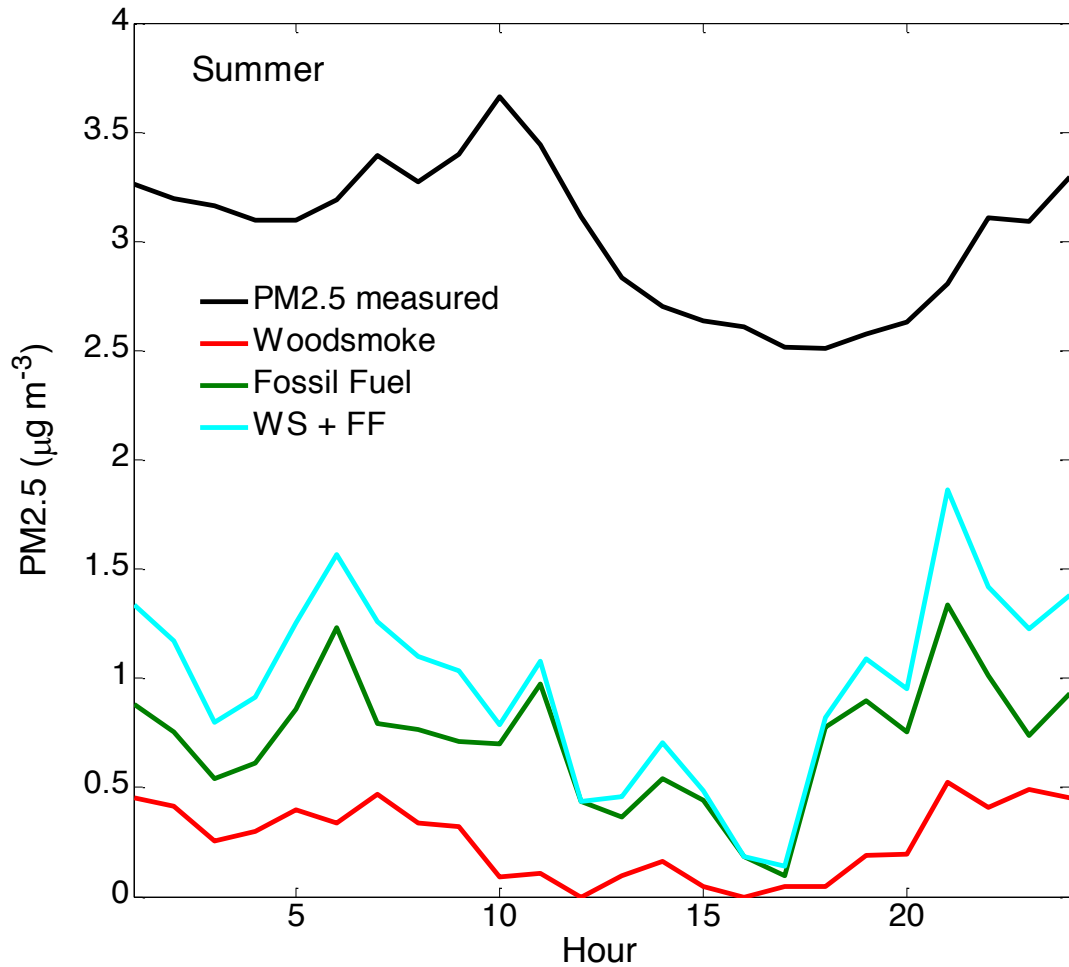
Winter Wind Rose and PM2.5 wind - Rochester



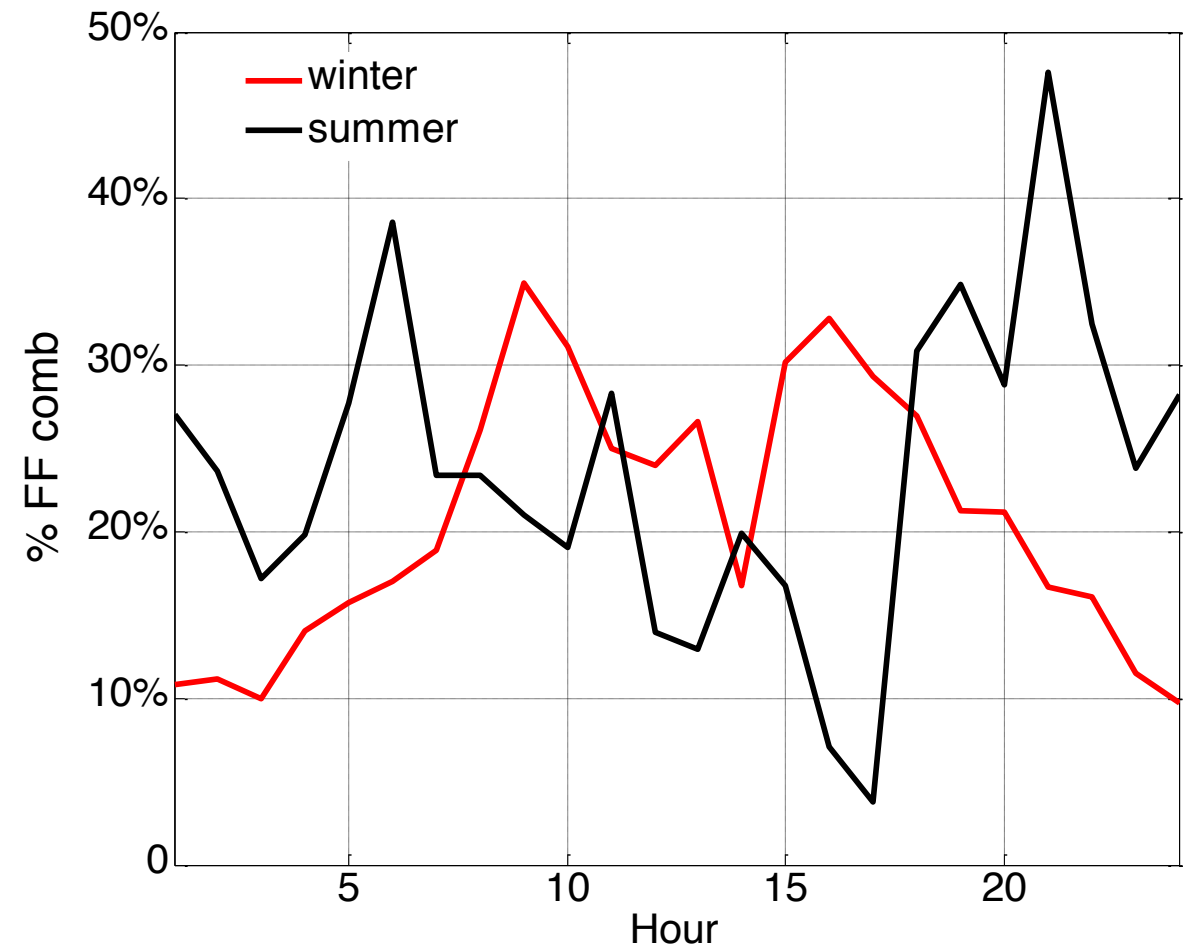
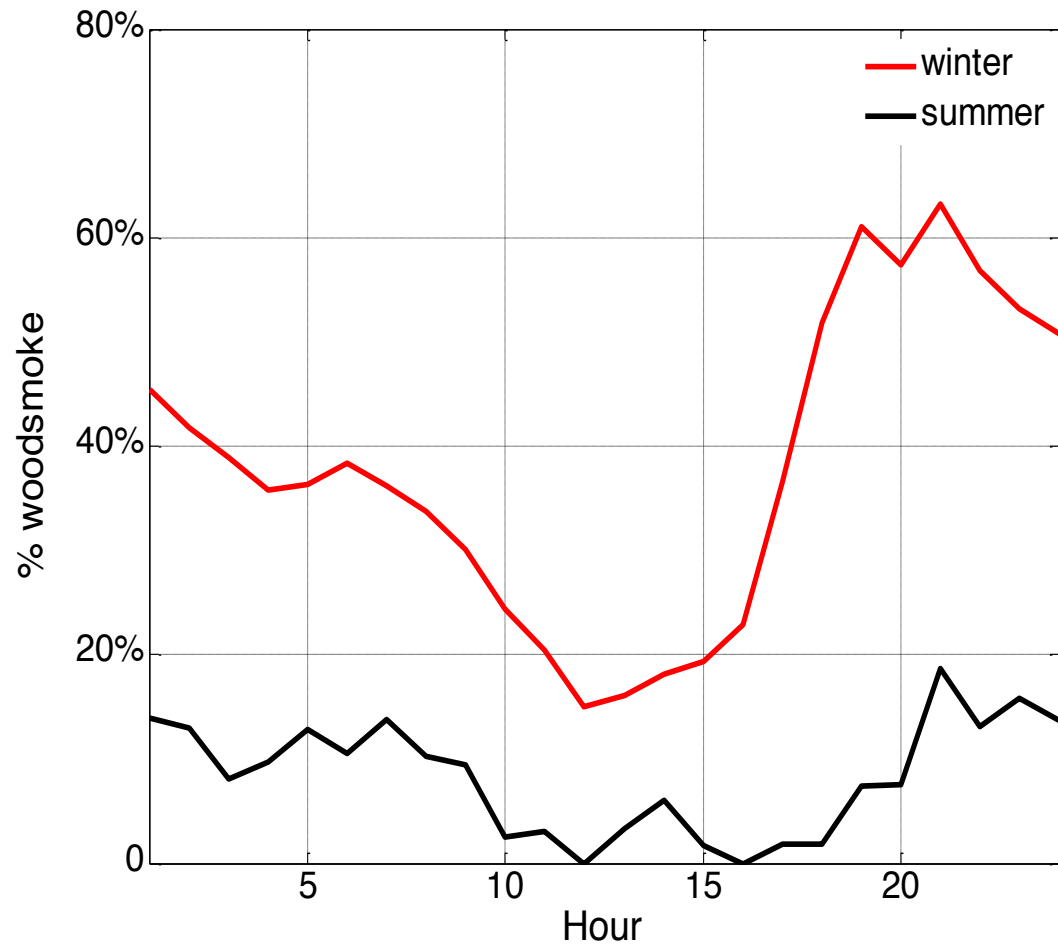
Diurnal variability in winter and summer PM



Light absorbing carbon (soot and smoke)

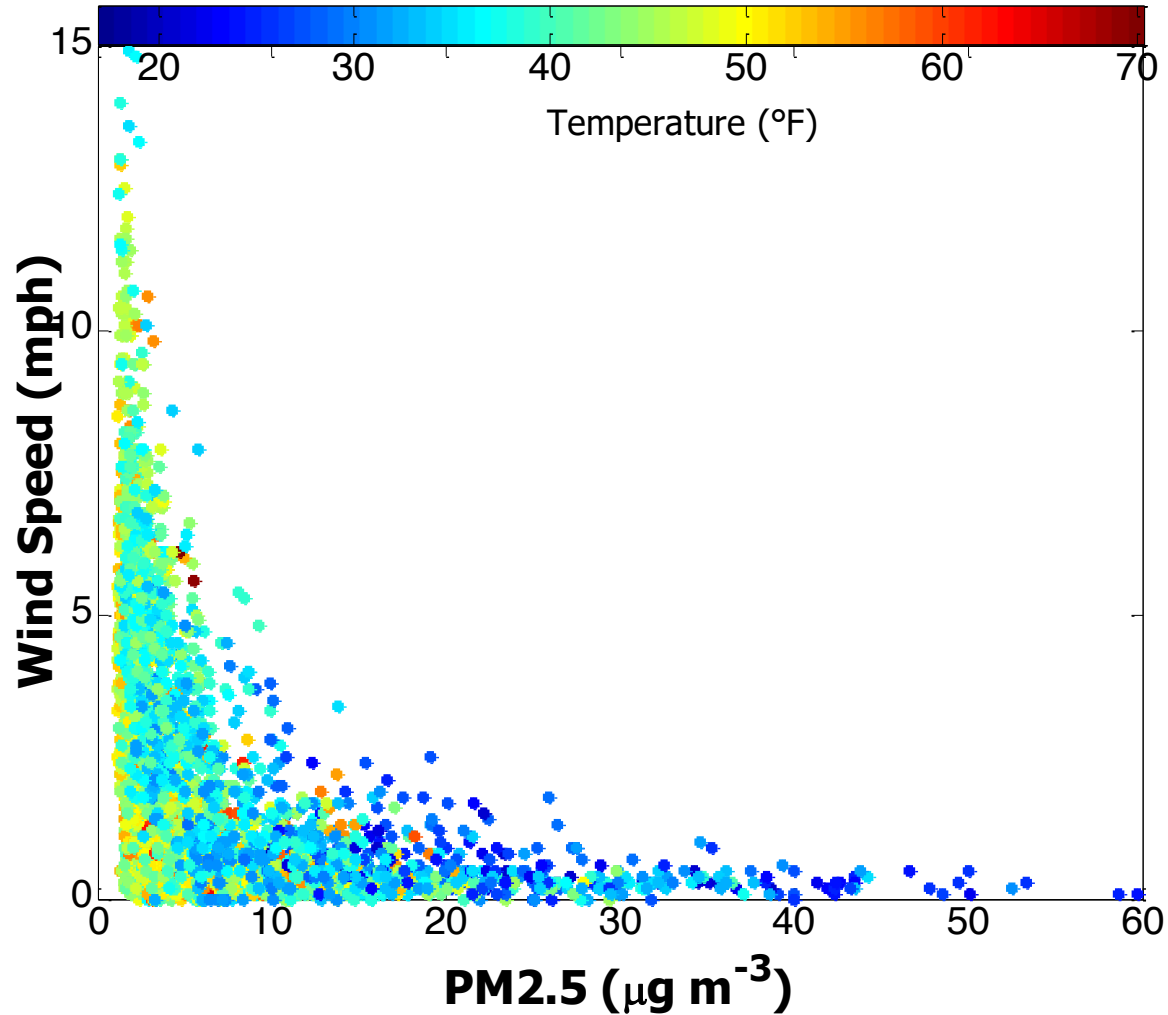


Daily contribution of wood smoke and fossil fuel combustion to PM2.5

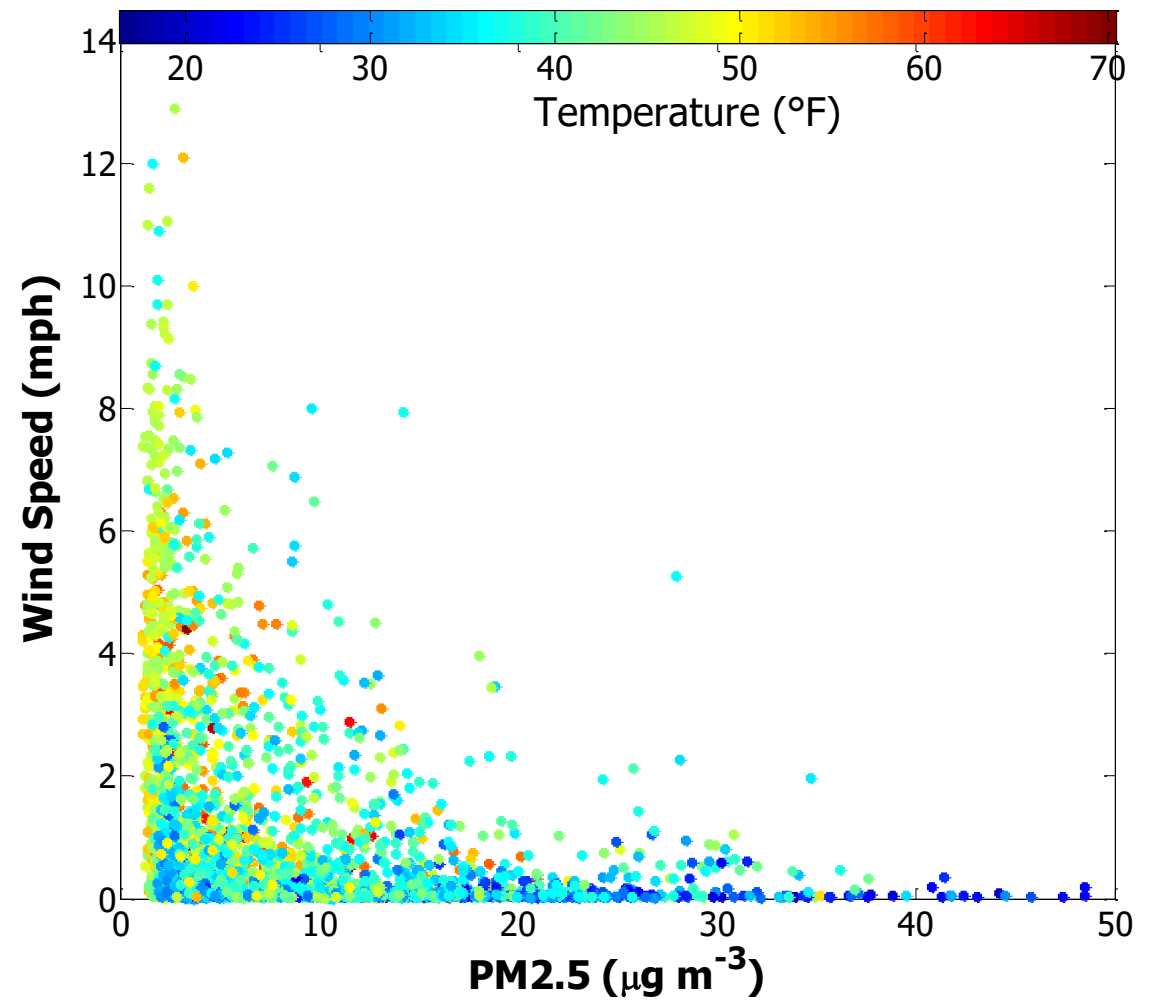


Hourly PM2.5 vs. WS vs. Temperature

Lacey, WA



Rochester, WA



Plot list

- Time series of all sites (24 hour avg)
- Black carbon and pm diurnal analysis
 - Summer
 - winter