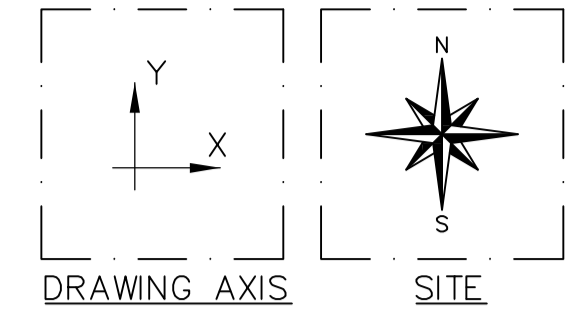
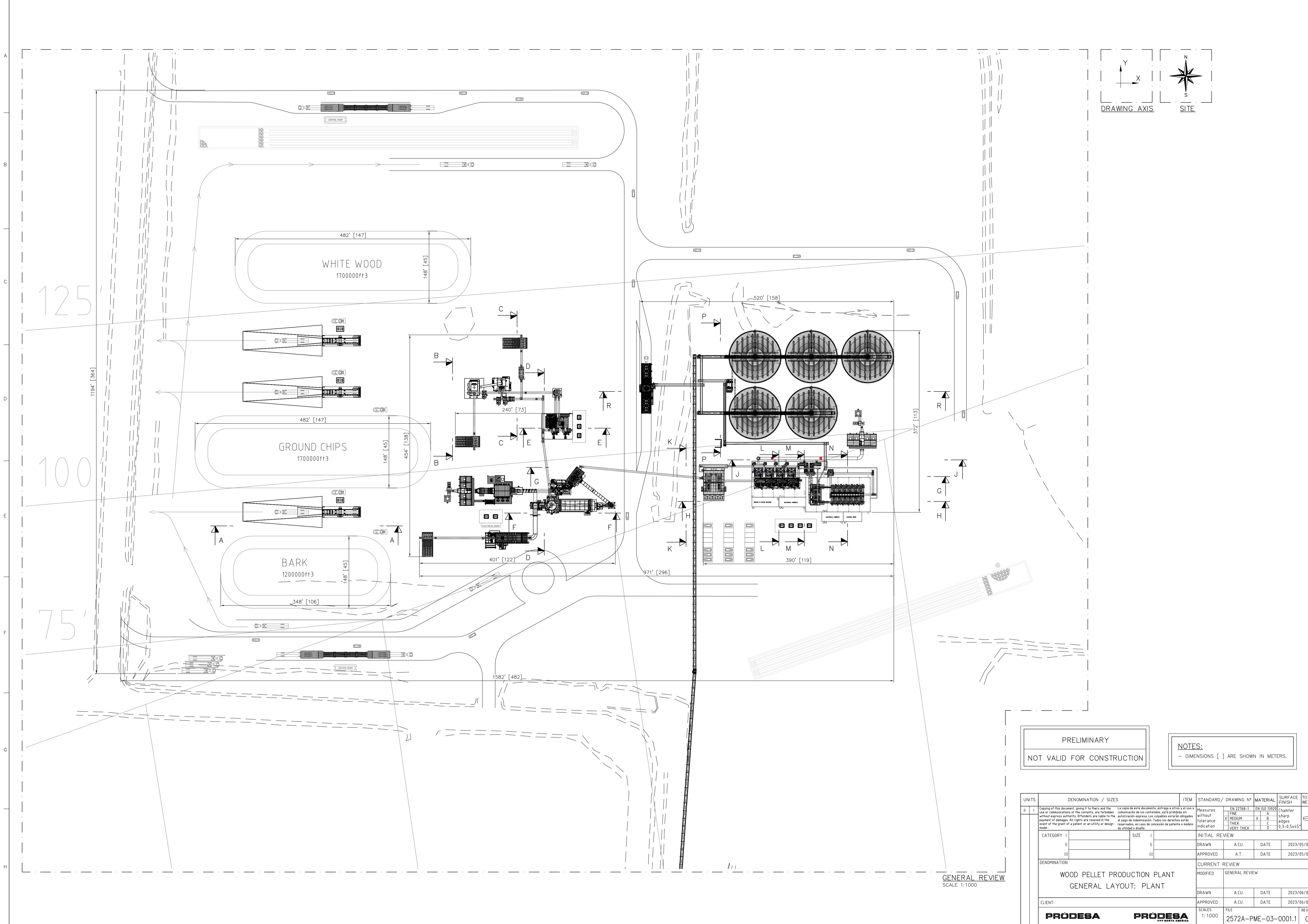


Appendix B
**Facility Layout and Process
Flow Diagrams**



125

100

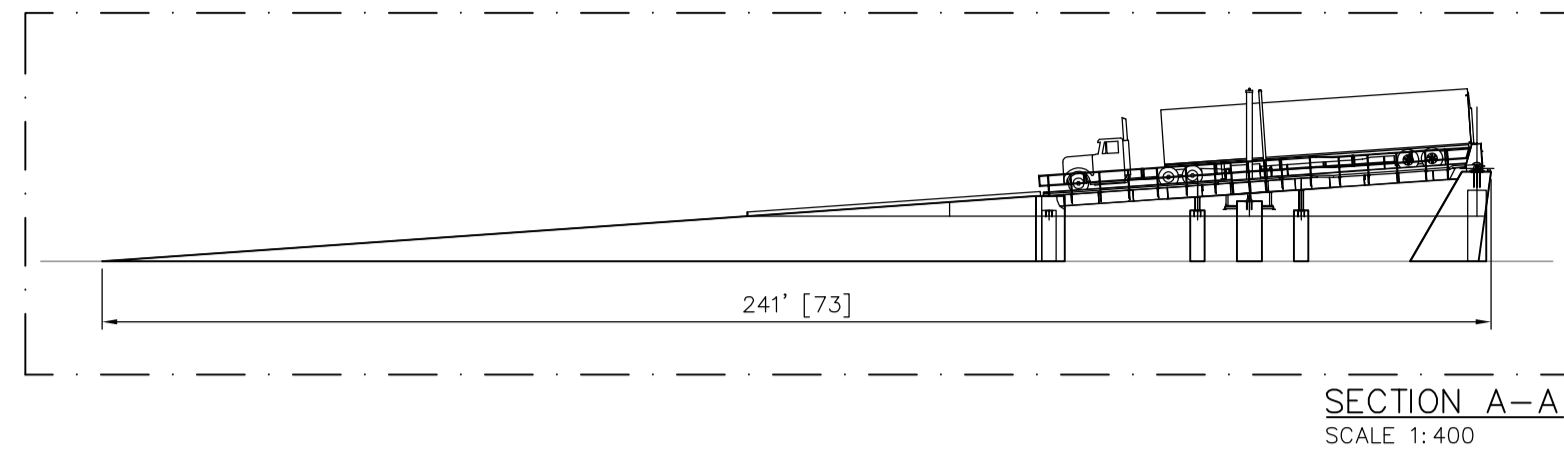
75'

PRELIMINARY
NOT VALID FOR CONSTRUCTION

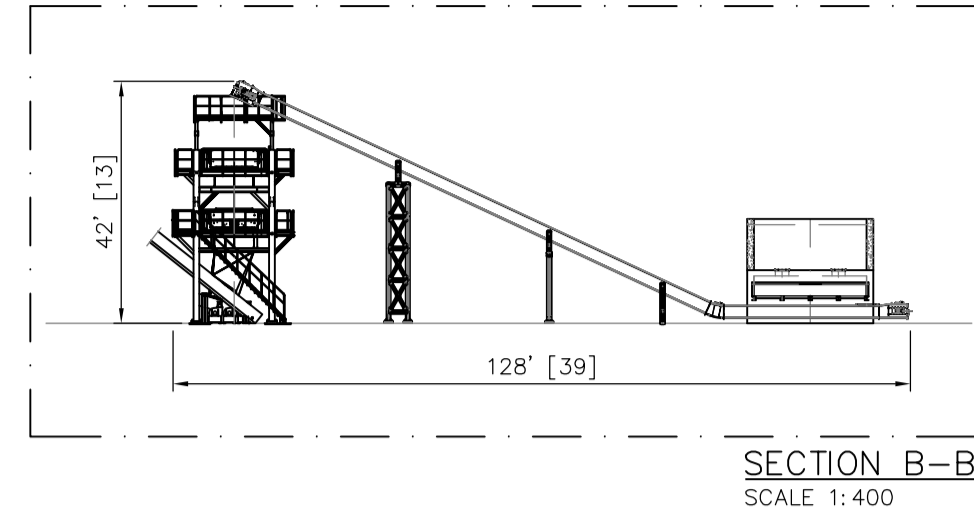
NOTES:
- DIMENSIONS [] ARE SHOWN IN METERS.

GENERAL REVIEW
SCALE 1:1000

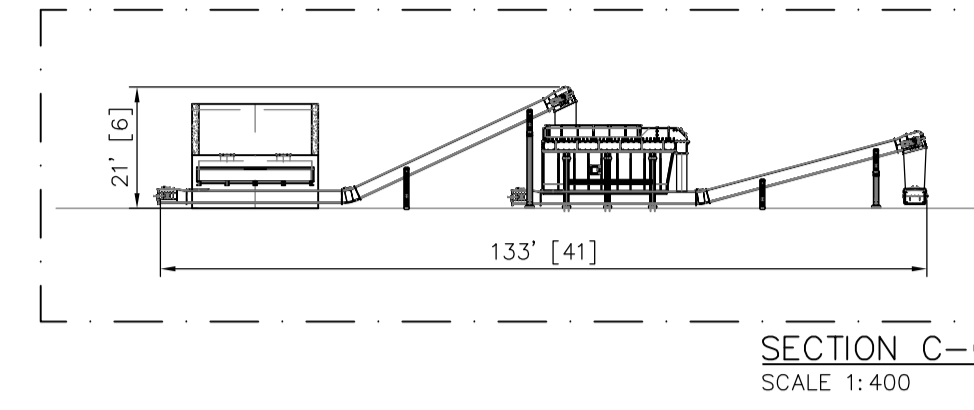
UNITS	DENOMINATION / SIZES	ITEM	STANDARD / DRAWING N°	MATERIAL	SURFACE FINISH	TOTAL WEIGHT
II	I	Measures without tolerance indication	EN 22368-1	EN ISO 15925	without sharp edges	
		FINE		A		
		MEDIUM		X	B	
		THICK		C		
		VERY THICK		D	0.3-0.5x45°	
CATEGORY I			INITIAL REVIEW			
	SIZE I		DRAWN	A.C.U.	DATE	2023/05/03
	SIZE II		APPROVED	A.T.	DATE	2023/05/03
DENOMINATION			CURRENT REVIEW			
WOOD PELLET PRODUCTION PLANT GENERAL LAYOUT: PLANT			MODIFIED	GENERAL REVIEW		
CLIENT:			DRAWN	A.C.U.	DATE	2023/06/02
PRÓDESA			APPROVED	A.C.U.	DATE	2023/06/02
PRÓDESA			SCALES	FILE	REVIEW	
1:1000			2572A-PME-03-0001.1	C		



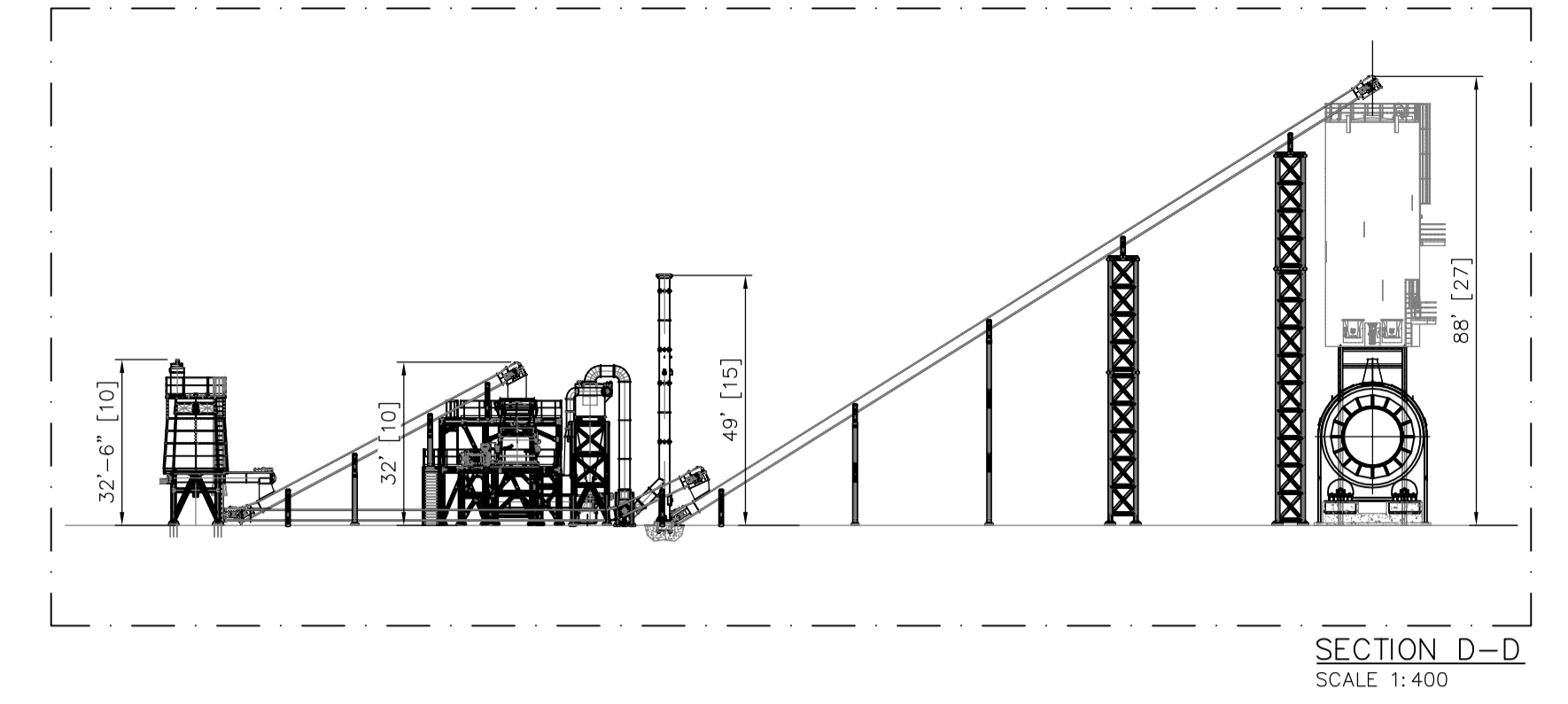
SECTION A-A
SCALE 1:400



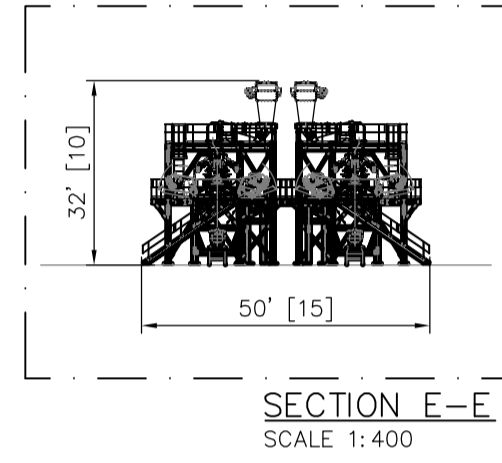
SECTION B-B
SCALE 1:400



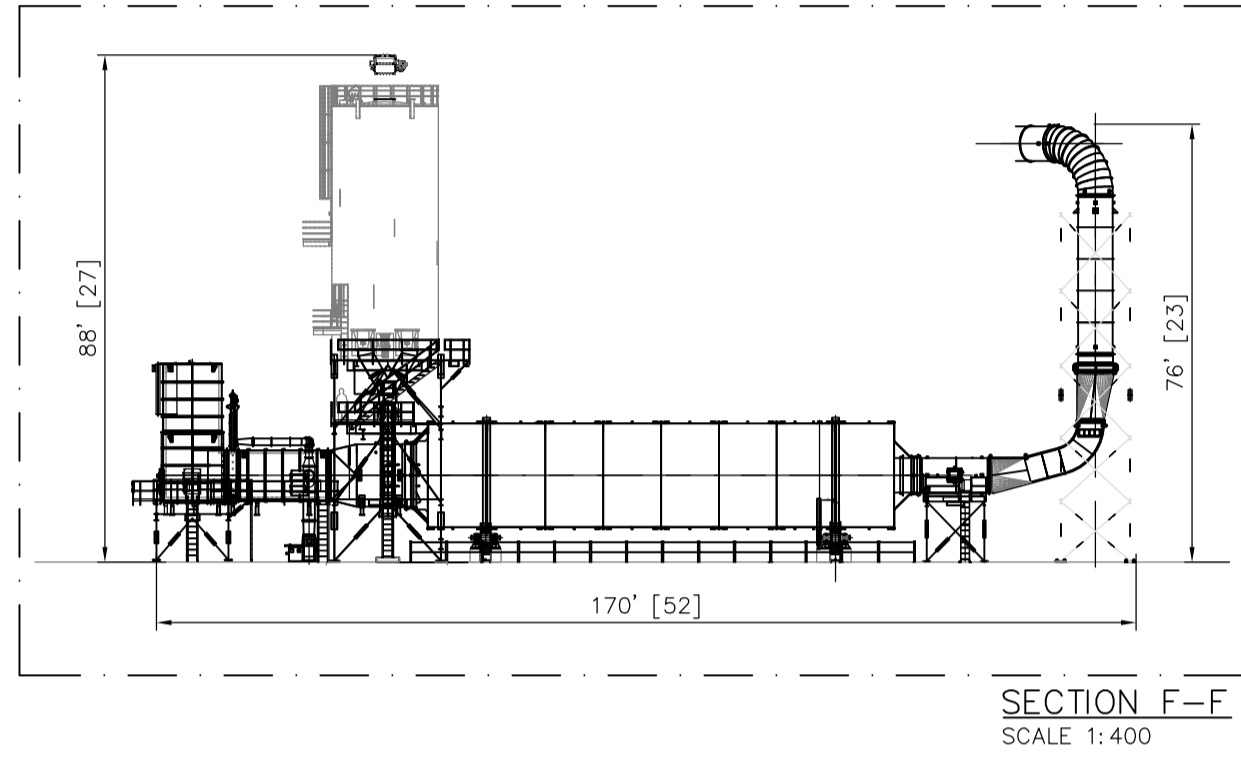
SECTION C-C
SCALE 1:400



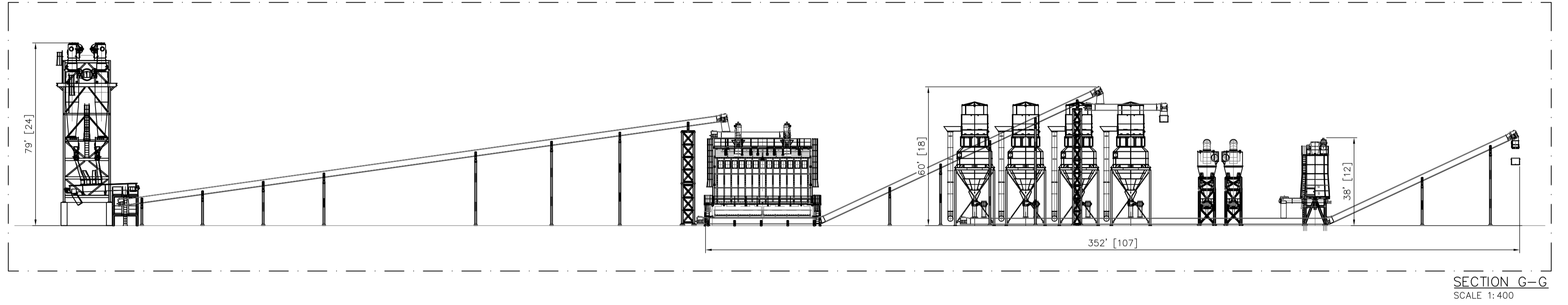
SECTION D-D
SCALE 1:400



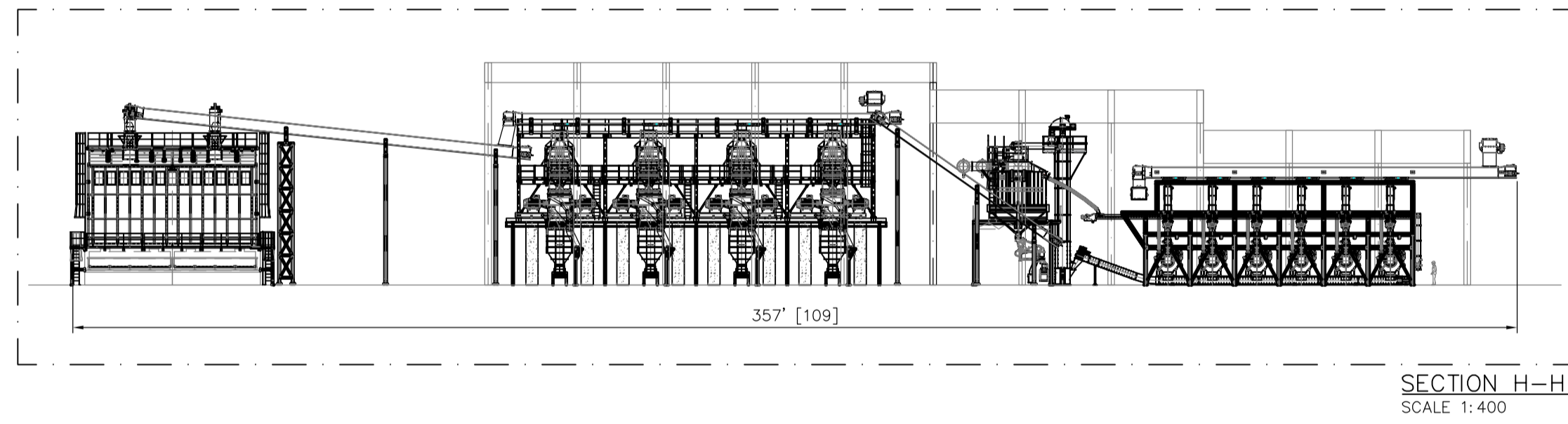
SECTION E-E
SCALE 1:400



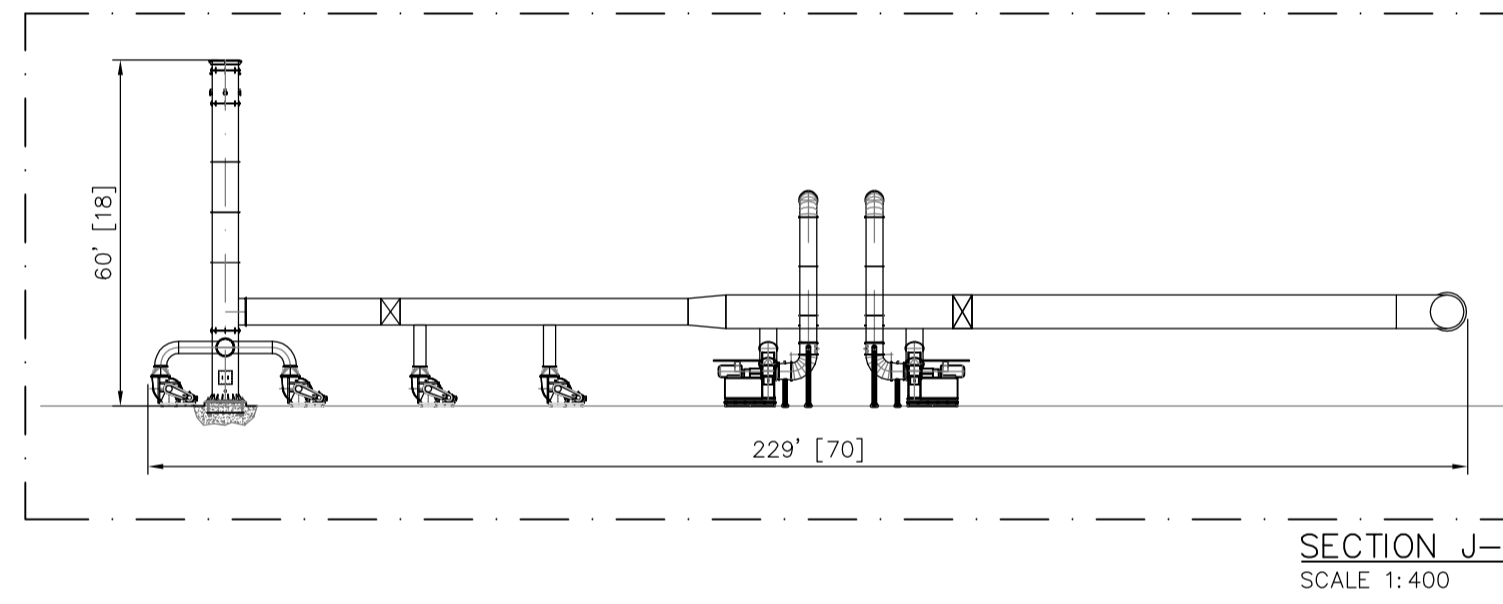
SECTION F-F
SCALE 1:400



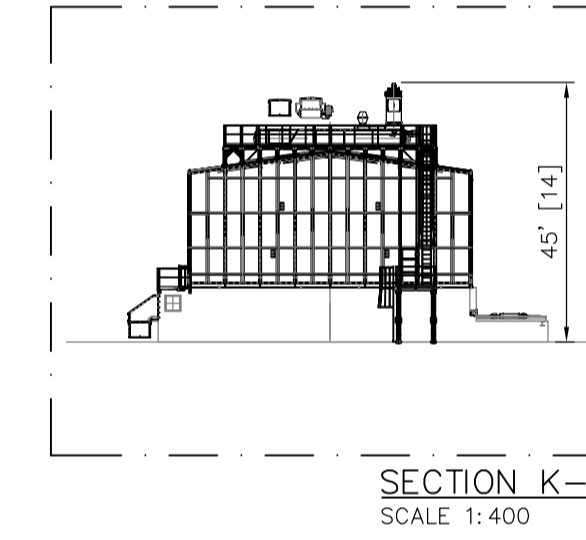
SECTION G-G
SCALE 1:400



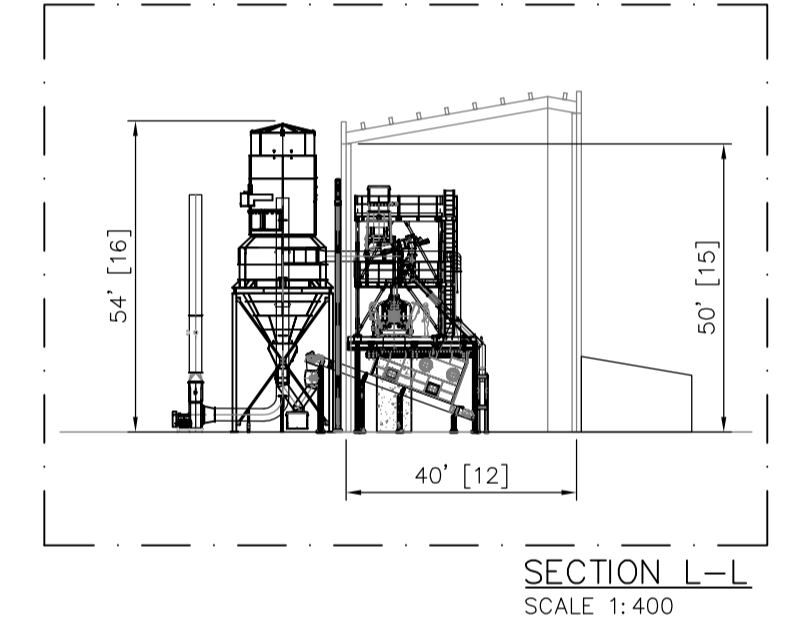
SECTION H-H
SCALE 1:400



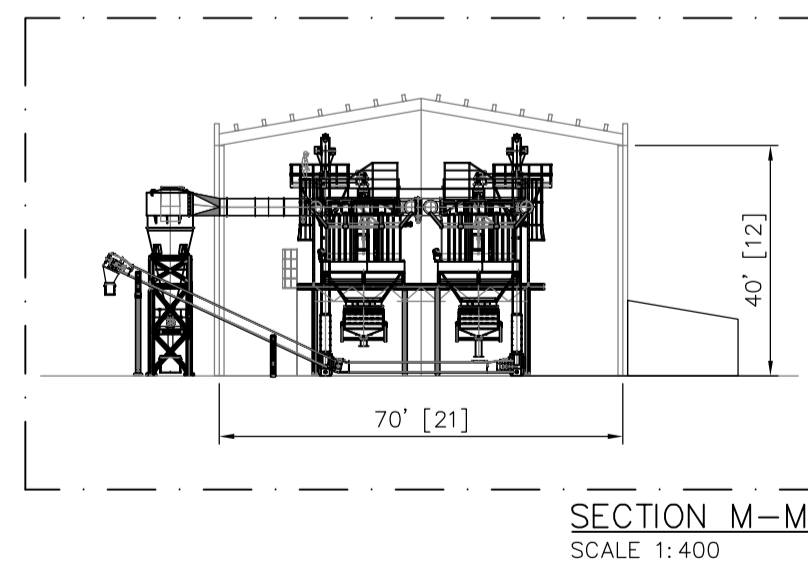
SECTION J-J
SCALE 1:400



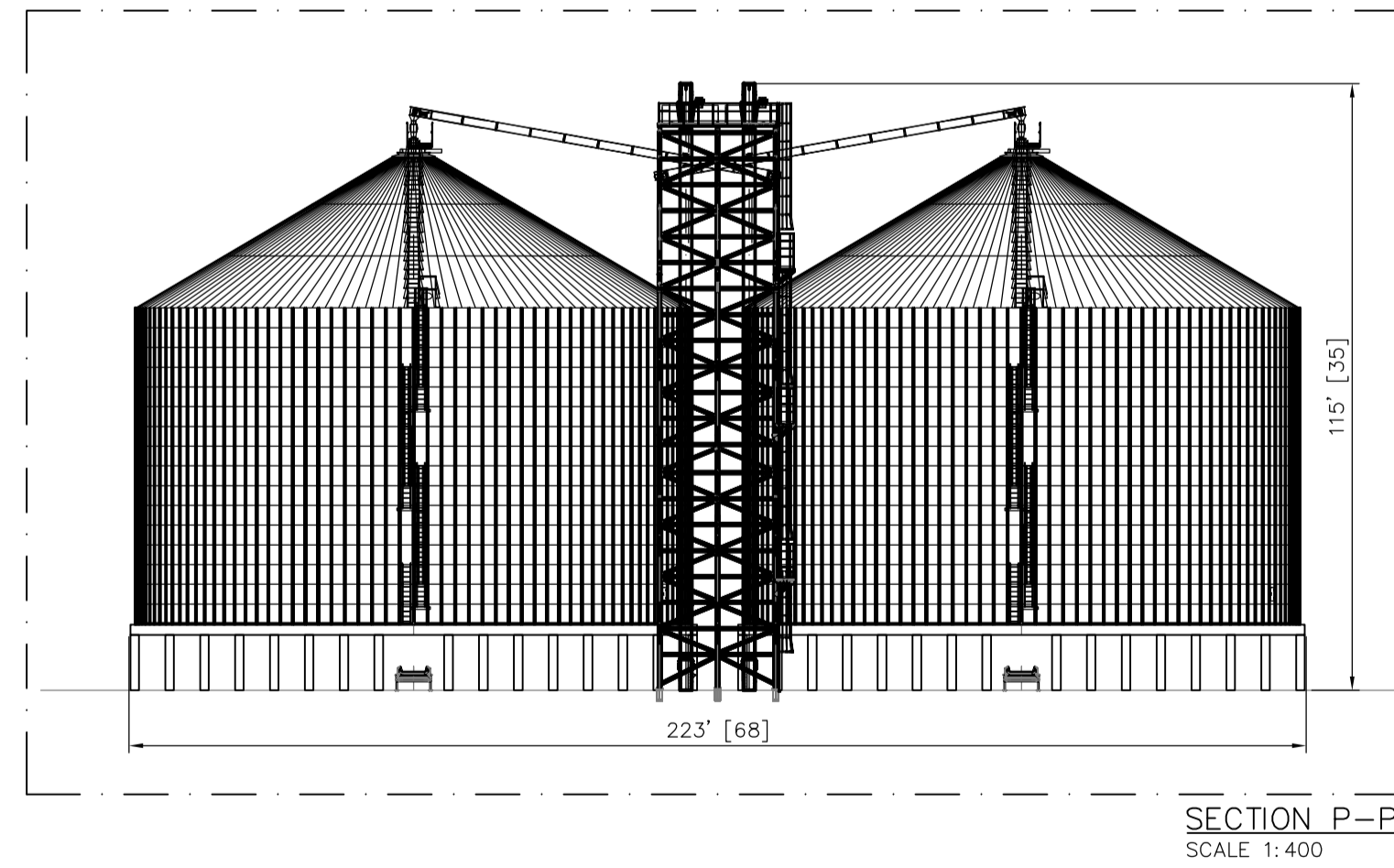
SECTION K-K
SCALE 1:400



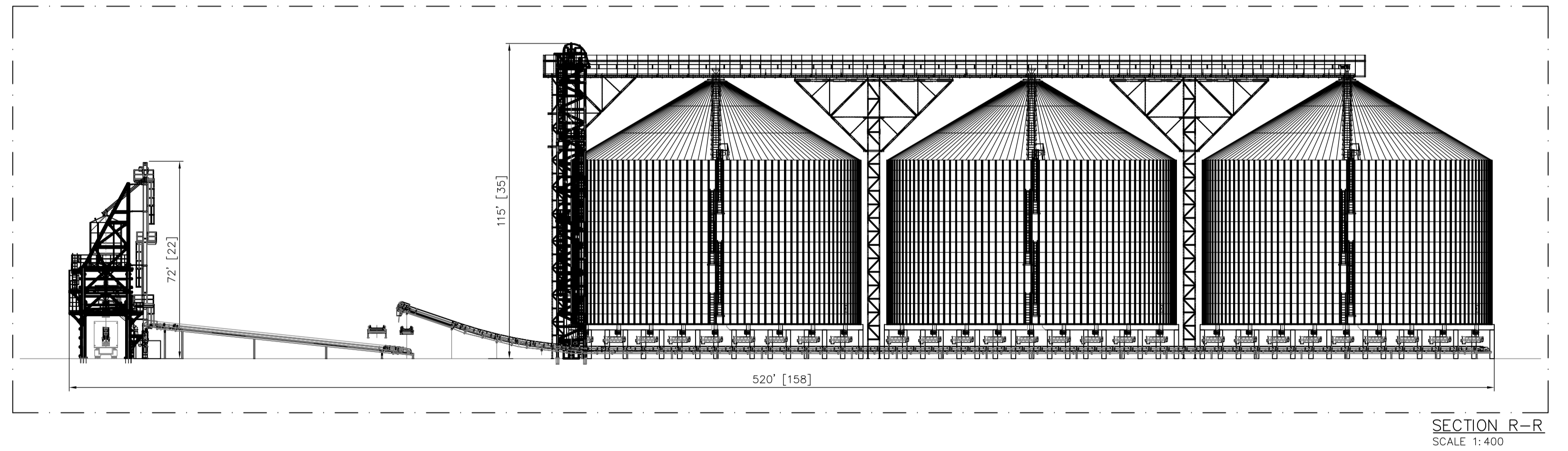
SECTION L-L
SCALE 1:400



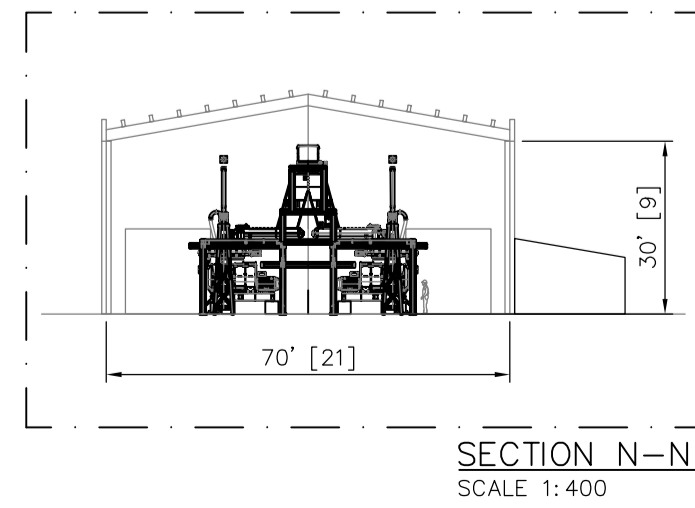
SECTION M-M
SCALE 1:400



SECTION P-P
SCALE 1:400



SECTION R-R
SCALE 1:400

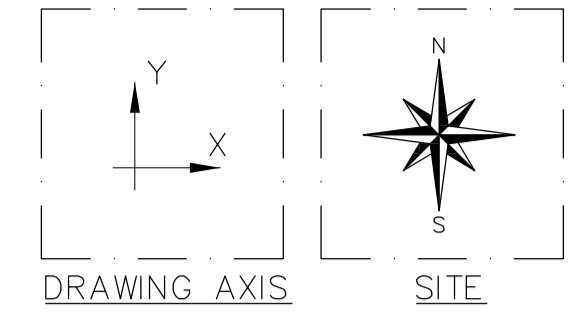
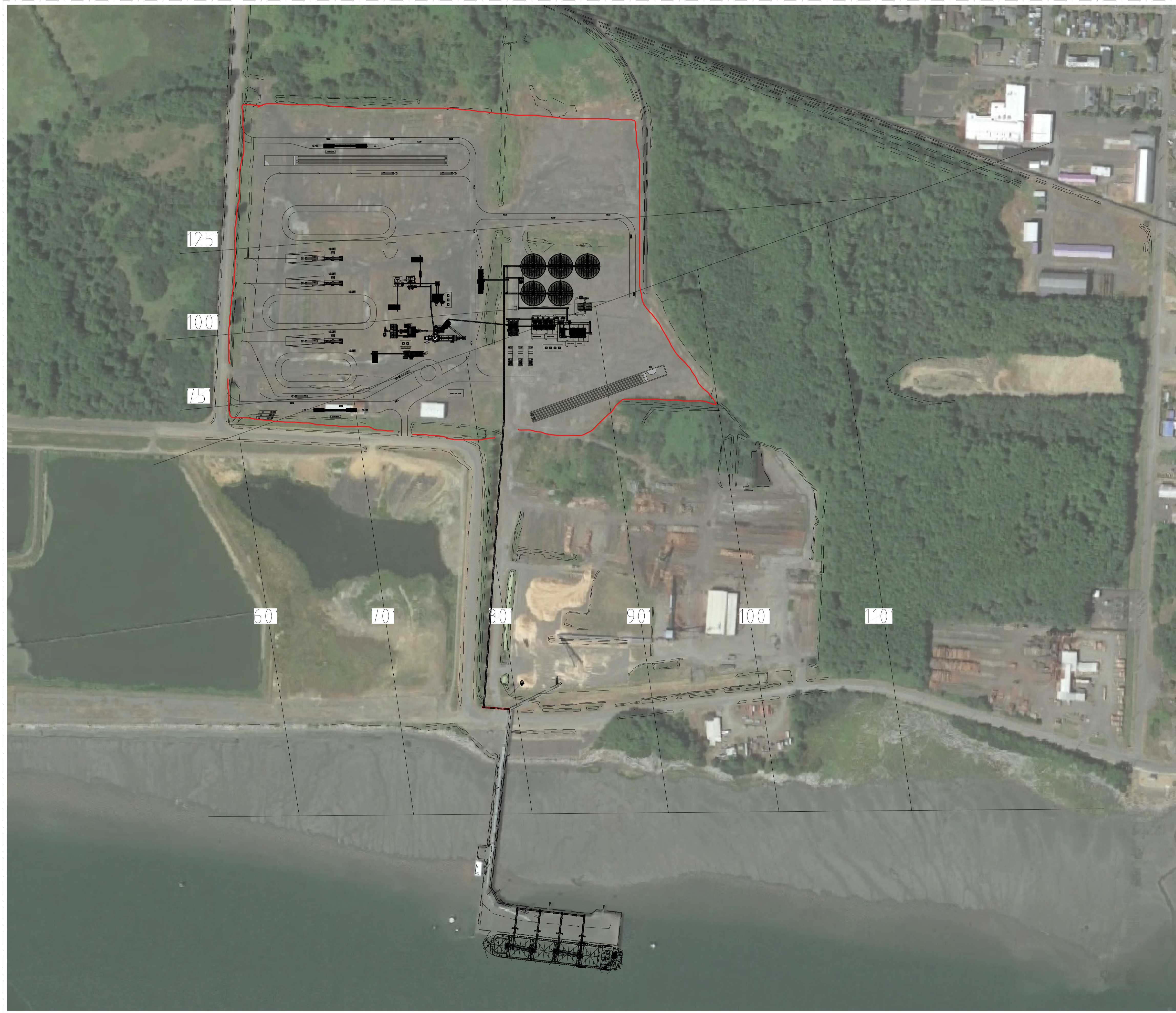


SECTION N-N
SCALE 1:400

PRELIMINARY
NOT VALID FOR CONSTRUCTION

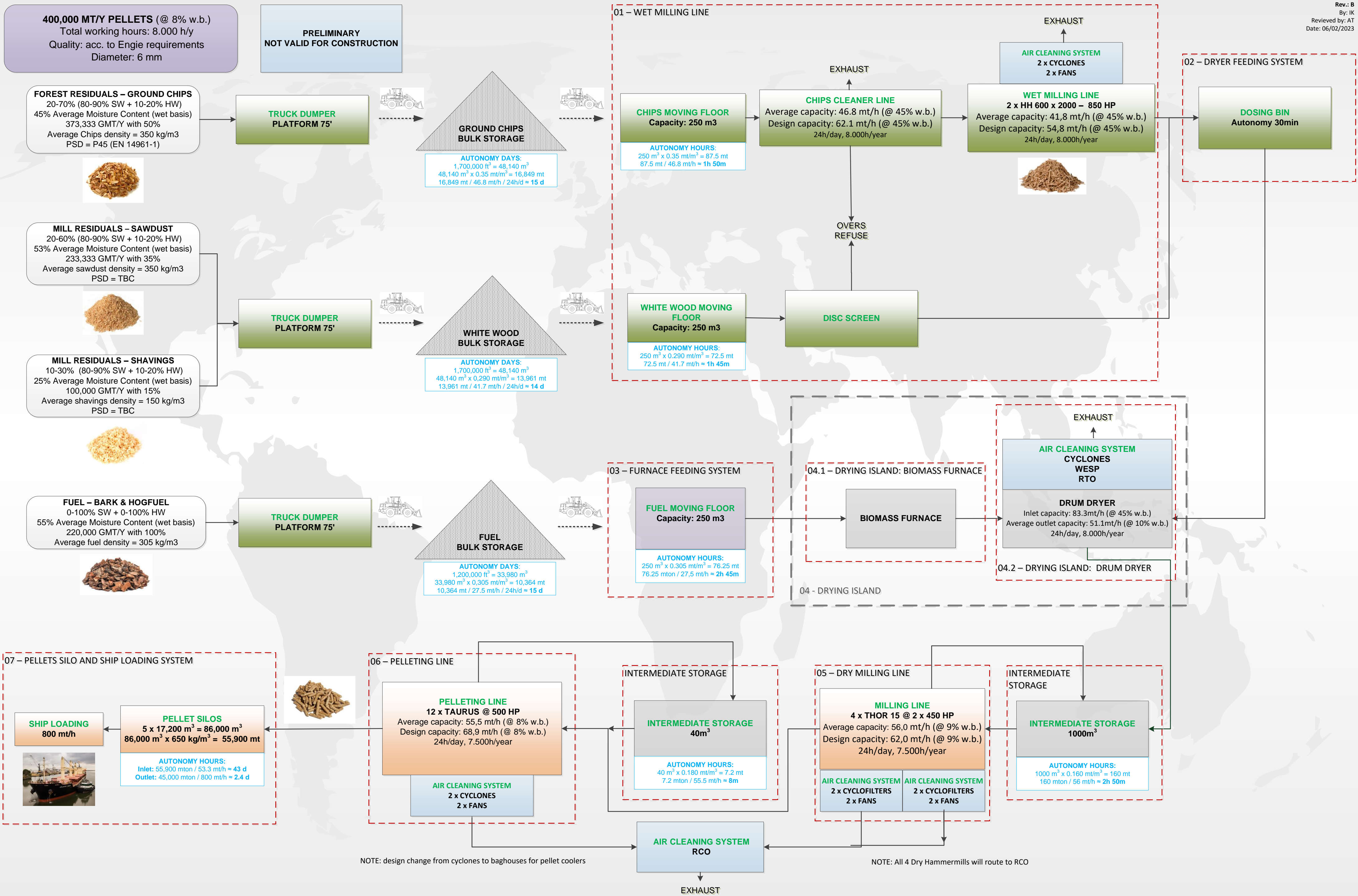
NOTES:
- DIMENSIONS [] ARE SHOWN IN METERS.

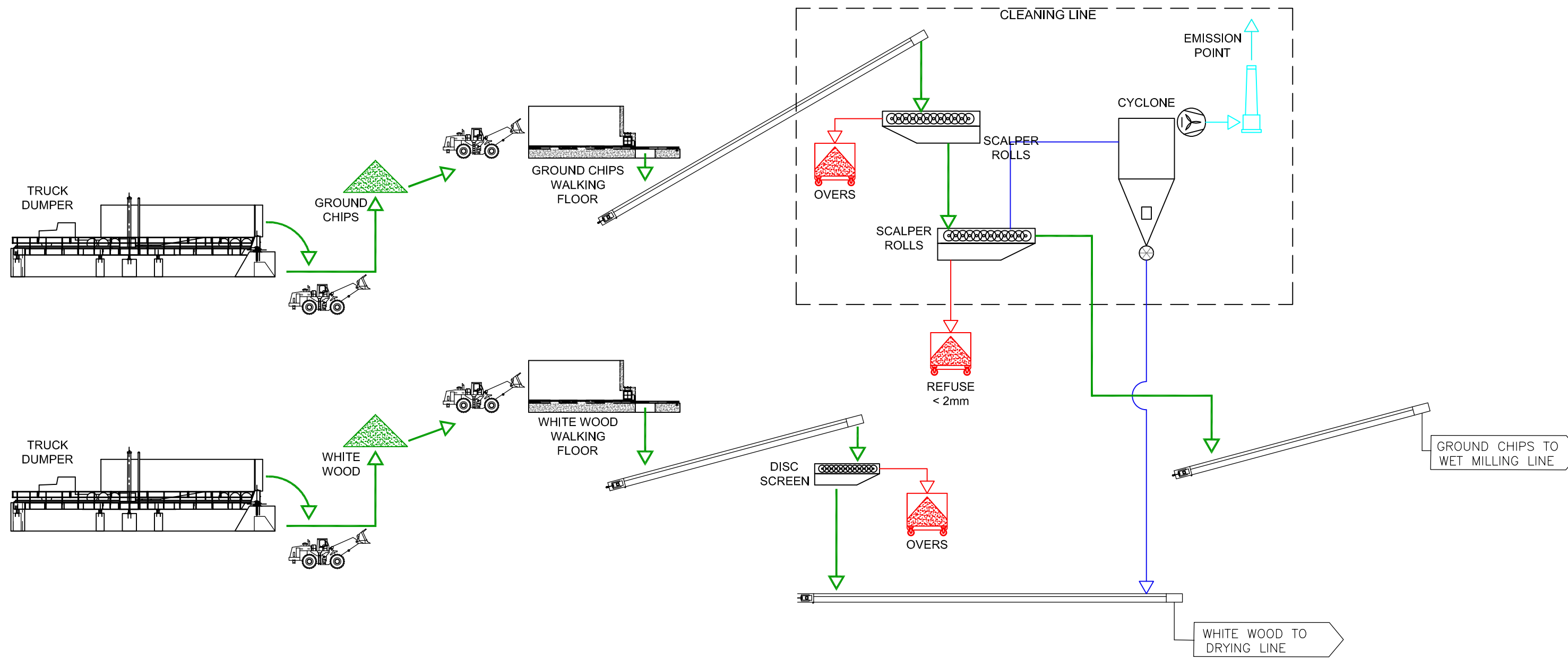
UNITS	DENOMINATION / SIZES	ITEM	STANDARD / DRAWING N°	MATERIAL	SURFACE FINISH	TOTAL WEIGHT
II	I	Measures without tolerance indication	EN 22368-1	A	Chamfer	
				B	Sharp edges	
				C	0.3-0.5x45°	
				D		
CATEGORY I	SIZE I	INITIAL REVIEW				
II	II	DRAWN	A.C.U.	DATE	2023/05/03	
III	III	APPROVED	A.T.	DATE	2023/05/03	
DENOMINATION			CURRENT REVIEW			
WOOD PELLET PRODUCTION PLANT			MODIFIED			
GENERAL LAYOUT: FRONT & SIDE VIEWS			GENERAL REVIEW			
DRAWN			A.C.U.	DATE	2023/06/02	
APPROVED			A.C.U.	DATE	2023/06/02	
CLIENT:	SCALES	FILE	APPROVED	FILE	REVIEW	
PRÓDESA	1:1000	2572A-PME-03-0001.2			C	



PRELIMINARY
NOT VALID FOR CONSTRUCTION

UNITS	DENOMINATION / SIZES	ITEM	STANDARD / DRAWING N°	MATERIAL	SURFACE FINISH	TOTAL WEIGHT
II	I	Measures without tolerance indication	EN 22368-1	EN ISO 15922	Chamfer	
			FINE	A	sharp edges	
			X MEDIUM	X B	edges	
			THICK	C		
			VERY THICK	D	0,3-0,5x45°	
CATEGORY I			INITIAL REVIEW			
III			DRAWN A.G. DATE 2023/06/09			
III			APPROVED A.G. DATE 2023/06/09			
DENOMINATION			CURRENT REVIEW			
WOOD PELLET PRODUCTION PLANT LOCATION PLANT			MODIFIED			
CLIENT:			DRAWN DATE			
PRÓDESA			APPROVED DATE			
PRÓDESA NORTH AMERICA			SCALES FILE REVIEW			
			1:1250 2572A-PME-03-0005			

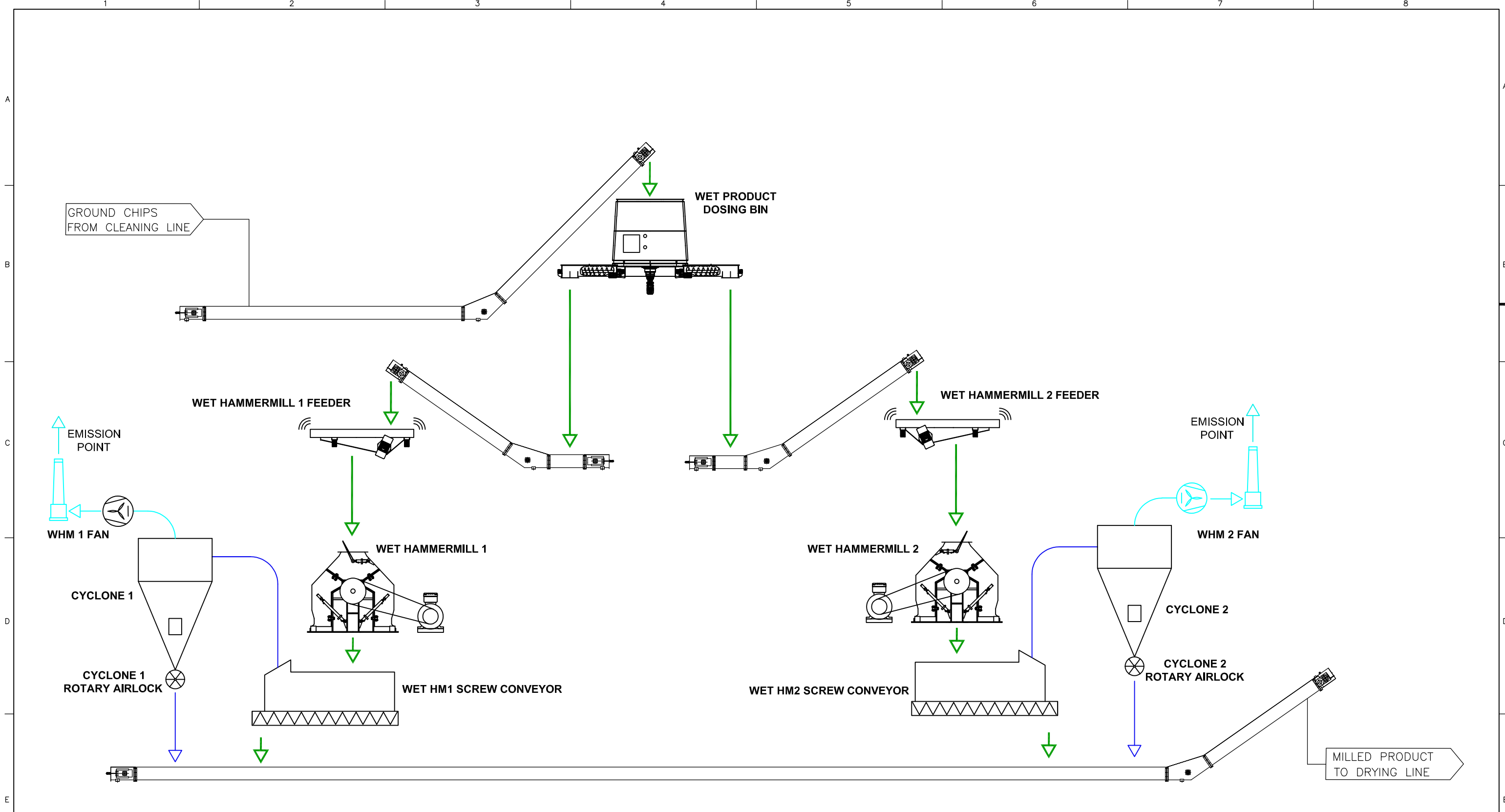




PRELIMINARY

- MAIN PELLETING FLOW
- DUST AND FINES FLOW
- EXHAUST AIR FLOW
- DRUM DRYER HOT AIR SYSTEM
- REFUSE FLOW

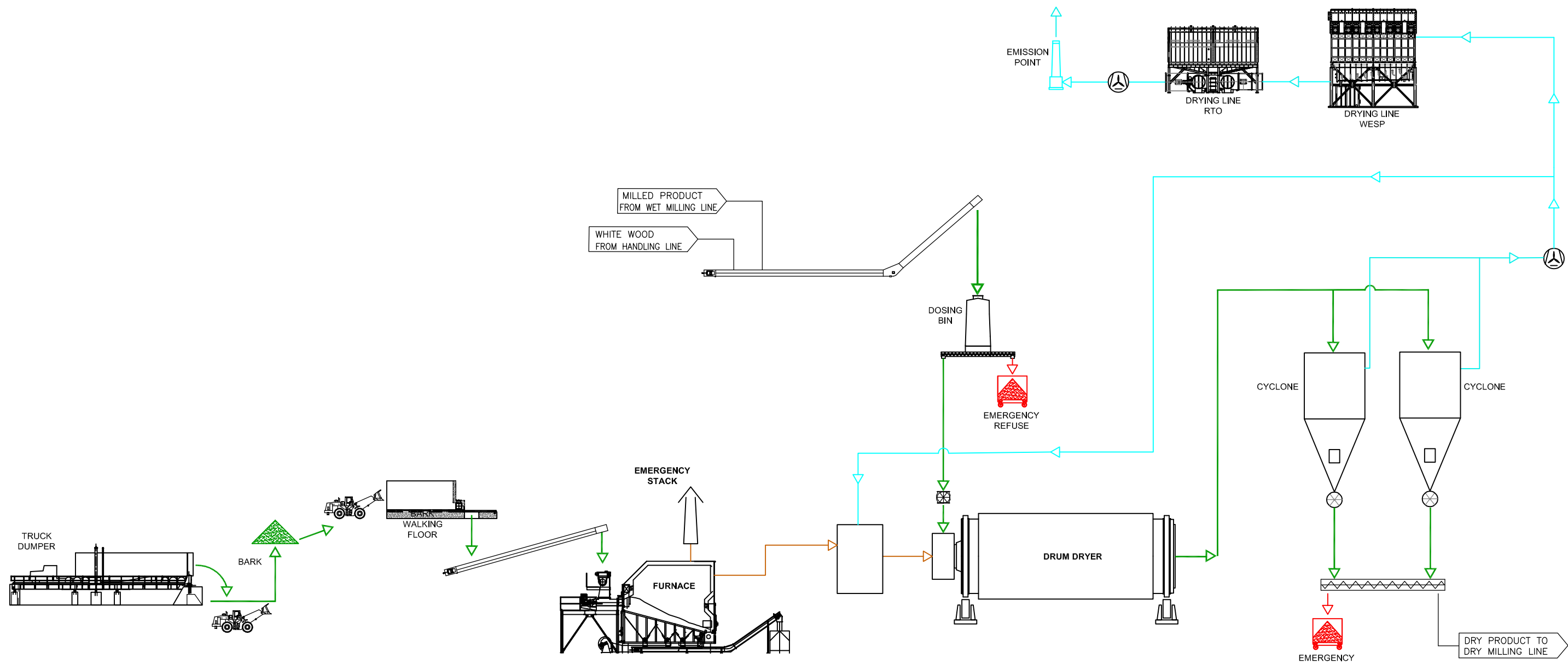
UNITS	DENOMINATION / SIZES	ITEM	STANDARD / DRAWING N°	MATERIAL	SURFACE FINISH	TOTAL WEIGHT
II	I	<small>Copying of this document, giving it to others and the use or communications of the contents, are forbidden without express authority. Offenders are liable to the payment of damages. All rights are reserved in the event of the grant of a patent or an utility or design model.</small>	<small>La copia de este documento, entrega a otros y el uso o comunicación de los contenidos, está prohibida sin autorización expresa. Los culpables estarán obligados al pago de indemnización. Todos los derechos están reservados, en caso de concesión de patente o modelo de utilidad o diseño.</small>	Measures without tolerance indication EN 22768-1 FINE X MEDIUM THICK VERY THICK	EN ISO 13920 A B C D	Chamfer sharp edges 0,3-0,5x45°
CATEGORY I			SIZE I		INITIAL REVIEW	
II			II		DRAWN	DVR DATE 2023/05/31
III			III		APPROVED	AT DATE 2023/05/31
DENOMINATION			CURRENT REVIEW			
PROCESS FLOW DIAGRAM WOOD HANDLING LINE			MODIFIED			
			DRAWN		DATE	
CLIENT:			APPROVED			
PRÓDESA			FILE		REVIEW	
			2572A-PME-04-0002.1		-	



PRELIMINARY

- MAIN PELLETING FLOW
- DUST AND FINES FLOW
- EXHAUST AIR FLOW
- DRUM DRYER HOT AIR SYSTEM
- REFUSE FLOW

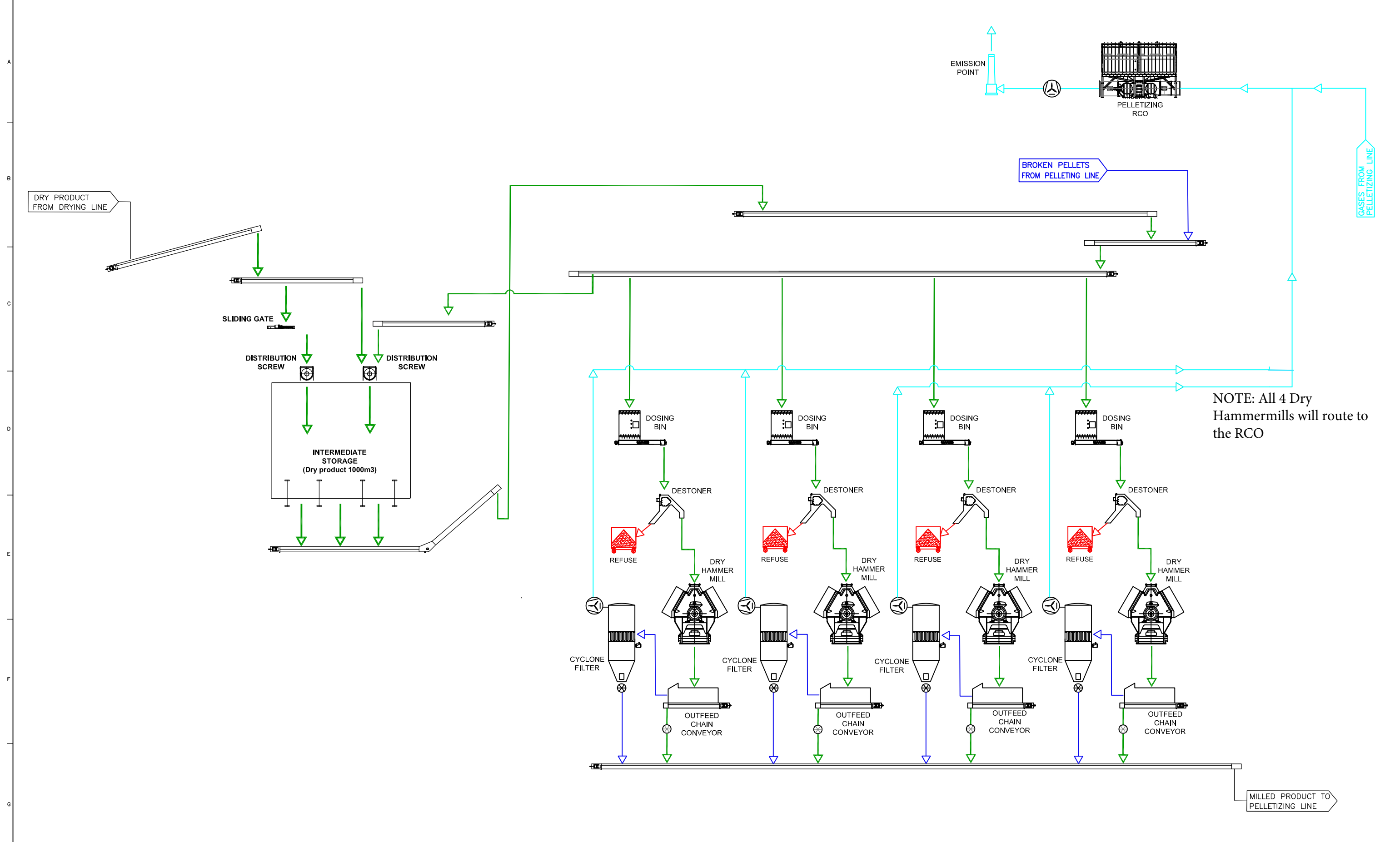
UNITS	DENOMINATION / SIZES	ITEM	STANDARD / DRAWING N°	MATERIAL	SURFACE FINISH	TOTAL WEIGHT										
II	<div style="font-size: 8px;"> Copying of this document, giving it to others and the use or communications of the contents, are forbidden without express authority. Offenders are liable to the payment of damages. All rights are reserved in the event of the grant of a patent or an utility or design model. </div> <div style="font-size: 8px; margin-top: 5px;"> La copia de este documento, entrega a otros y el uso o comunicación de los contenidos, está prohibida sin autorización expresa. Los culpables estarán obligados al pago de indemnización. Todos los derechos están reservados, en caso de concesión de patente o modelo de utilidad o diseño. </div>		Measures without tolerance indication	<table border="1" style="font-size: 8px;"> <tr><td>EN 22768-1</td><td>EN ISO 13920</td></tr> <tr><td>FINE</td><td>A</td></tr> <tr><td>X MEDIUM</td><td>X B</td></tr> <tr><td>THICK</td><td>C</td></tr> <tr><td>VERY THICK</td><td>D</td></tr> </table>	EN 22768-1	EN ISO 13920	FINE	A	X MEDIUM	X B	THICK	C	VERY THICK	D	Chamfer sharp edges	0,3-0,5x45°
EN 22768-1	EN ISO 13920															
FINE	A															
X MEDIUM	X B															
THICK	C															
VERY THICK	D															
CATEGORY I	SIZE I	INITIAL REVIEW														
II	II	DRAWN	DVR	DATE	2023/05/31											
III	III	APPROVED	AT	DATE	2023/05/31											
DENOMINATION			CURRENT REVIEW													
PROCESS FLOW DIAGRAM WET MILLING LINE			MODIFIED													
DRAWN			DATE													
CLIENT:			APPROVED	DATE												
PRÓDESA		PRÓDESA <small>FOR NORTH AMERICA</small>		SCALES	FILE	REVIEW										
					2572A-PME-04-0002.2	—										



PRELIMINARY

- MAIN PELLETING FLOW
- DUST AND FINES FLOW
- EXHAUST AIR FLOW
- DRUM DRYER HOT AIR SYSTEM
- REFUSE FLOW

UNITS	DENOMINATION / SIZES	ITEM	STANDARD/ DRAWING N°	MATERIAL	SURFACE FINISH	TOTAL WEIGHT
II	I	Measures without	EN 22768-1	EN ISO 19252	Chamfer sharp edges	1,3-0,5x45"
		without				
		Polycarbonate	X	B		
		VERY	VERY	C		
				D		
CATEGORY I		SIZE I	INITIAL REVIEW			
II	II	DRAWN	DVR	DATE	2023/05/31	
III	III	APPROVED	AT	DATE	2023/05/31	
DENOMINATION		CURRENT REVIEW		MODIFIED		
PROCESS FLOW DIAGRAM		DRAWN		DATE		
DRYING LINE		APPROVED		DATE		
CLIENT: PRÓDESA		SCALES		FILE		
PRÓDESA		2572A-PME-04-0002.3		REVIEW		

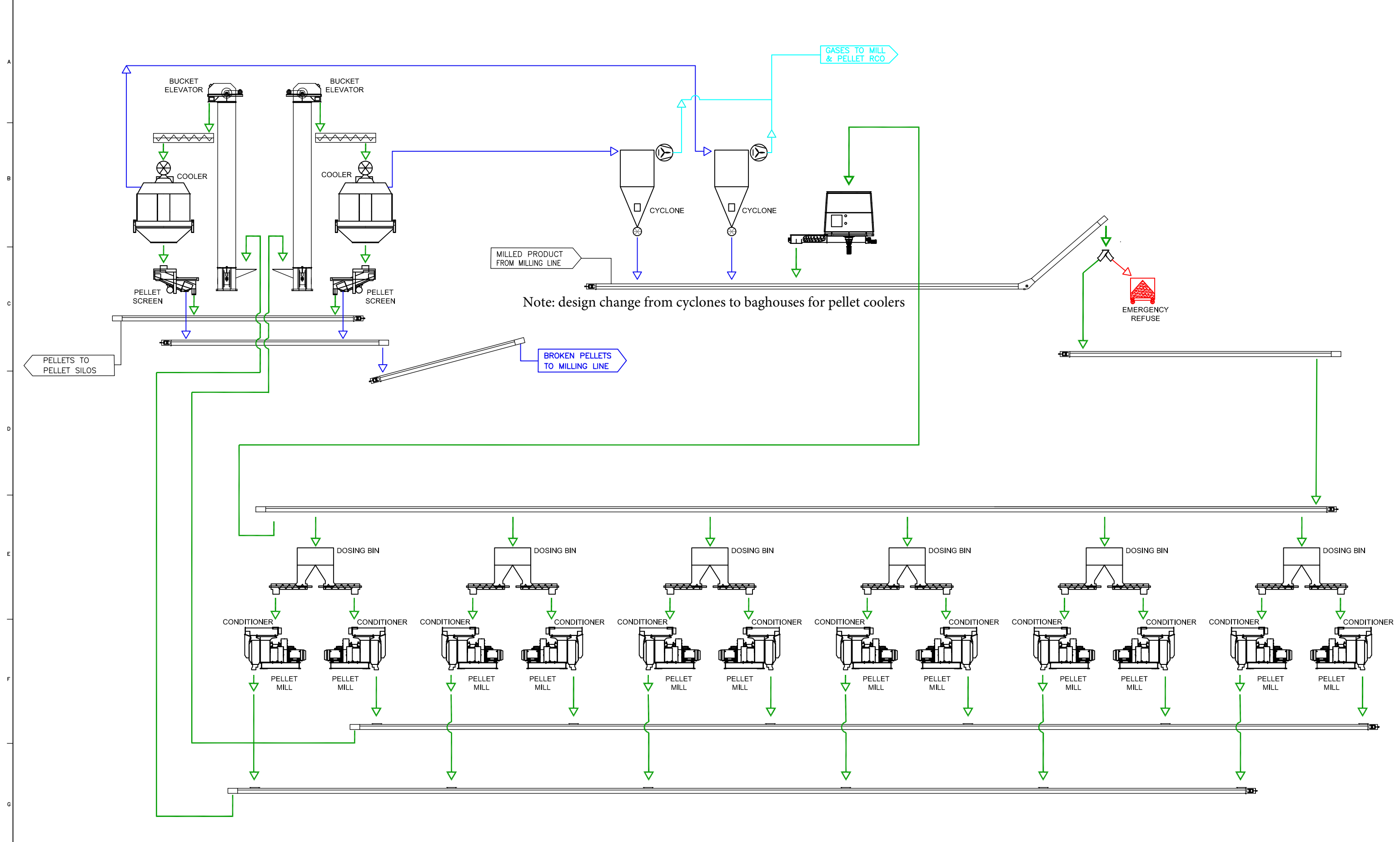


NOTE: All 4 Dry Hammermills will route to the RCO

PRELIMINARY

- MAIN PELLETING FLOW
- DUST AND FINES FLOW
- EXHAUST AIR FLOW
- DRUM DRYER HOT AIR SYSTEM
- REFUSE FLOW

UNITS	DENOMINATION / SIZES	ITEM	STANDARD/ DRAWING N°	MATERIAL	SURFACE FINISH	TOTAL WEIGHT
II	I	III	IV	V	VI	VII
Copying of this document, giving it to third and the use or communication of the contents, are forbidden without express authority. Offenders are liable to the payment of damages. All rights are reserved in the event of the grant of a patent or an utility or design model.						
La copia de este documento, otorgarlo a otros o el uso o comunicación de los contenidos, son prohibidos sin autorización expresa. Los culpables estarán obligados al pago de indemnización. Todos los derechos están reservados, en caso de concesión de patente o modelo de utilidad o diseño.						
CATEGORY I II III			INITIAL REVIEW DRAWN: DVR DATE: 2023/05/31 APPROVED: AT DATE: 2023/05/31		Chamber sharp edges 0,3-0,5x45°	
DENOMINATION PROCESS FLOW DIAGRAM DRY MILLING LINE			CURRENT REVIEW MODIFIED: DRAWN: DATE: APPROVED: DATE:			
CLIENT: PRÓDESA			SCALES: FILE PRÓDESA		2572A-PME-04-0002.4 REVIEW:	

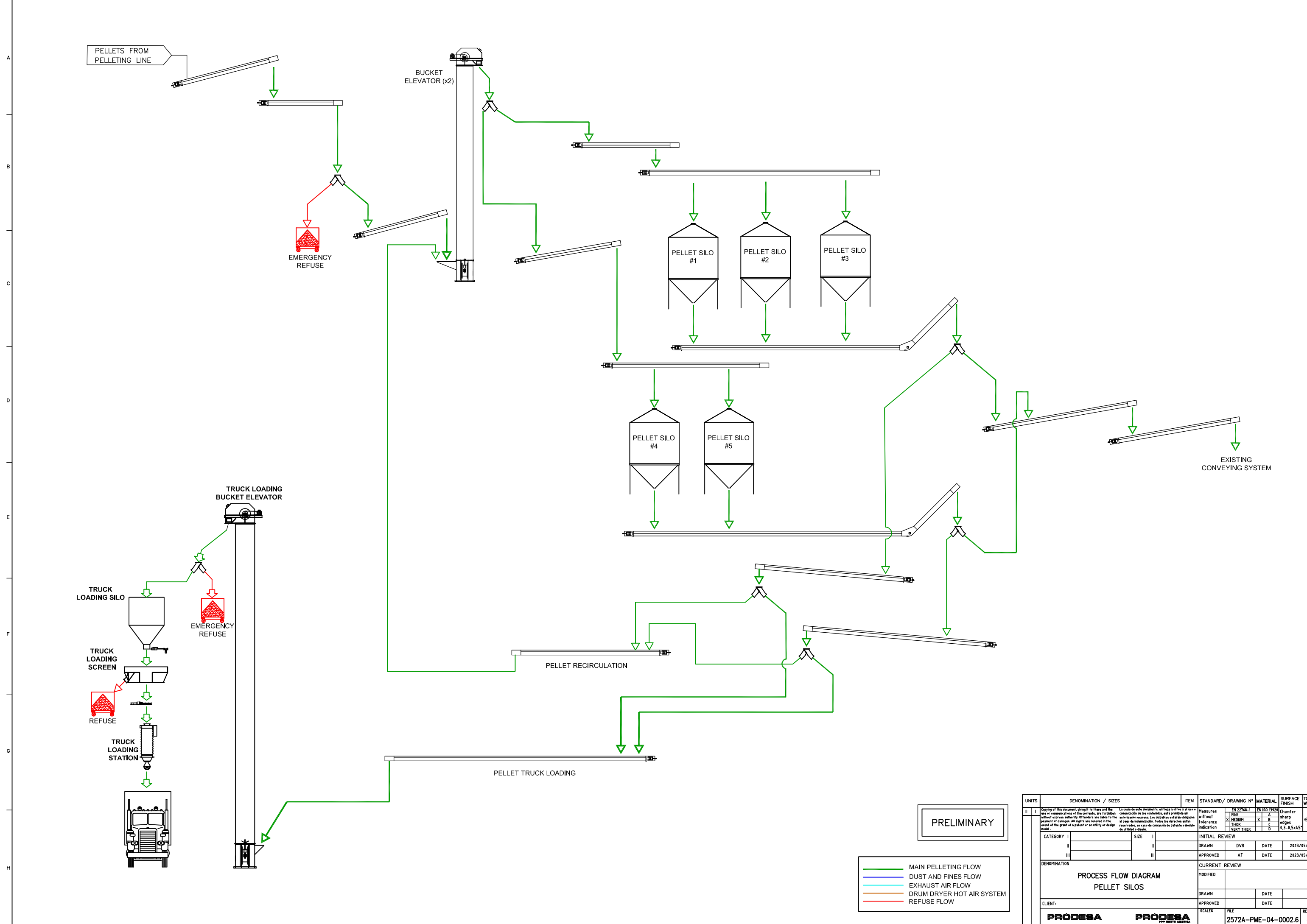


Note: design change from cyclones to baghouses for pellet coolers

PRELIMINARY

- MAIN PELLETING FLOW
- DUST AND FINES FLOW
- EXHAUST AIR FLOW
- DRUM DRYER HOT AIR SYSTEM
- REFUSE FLOW

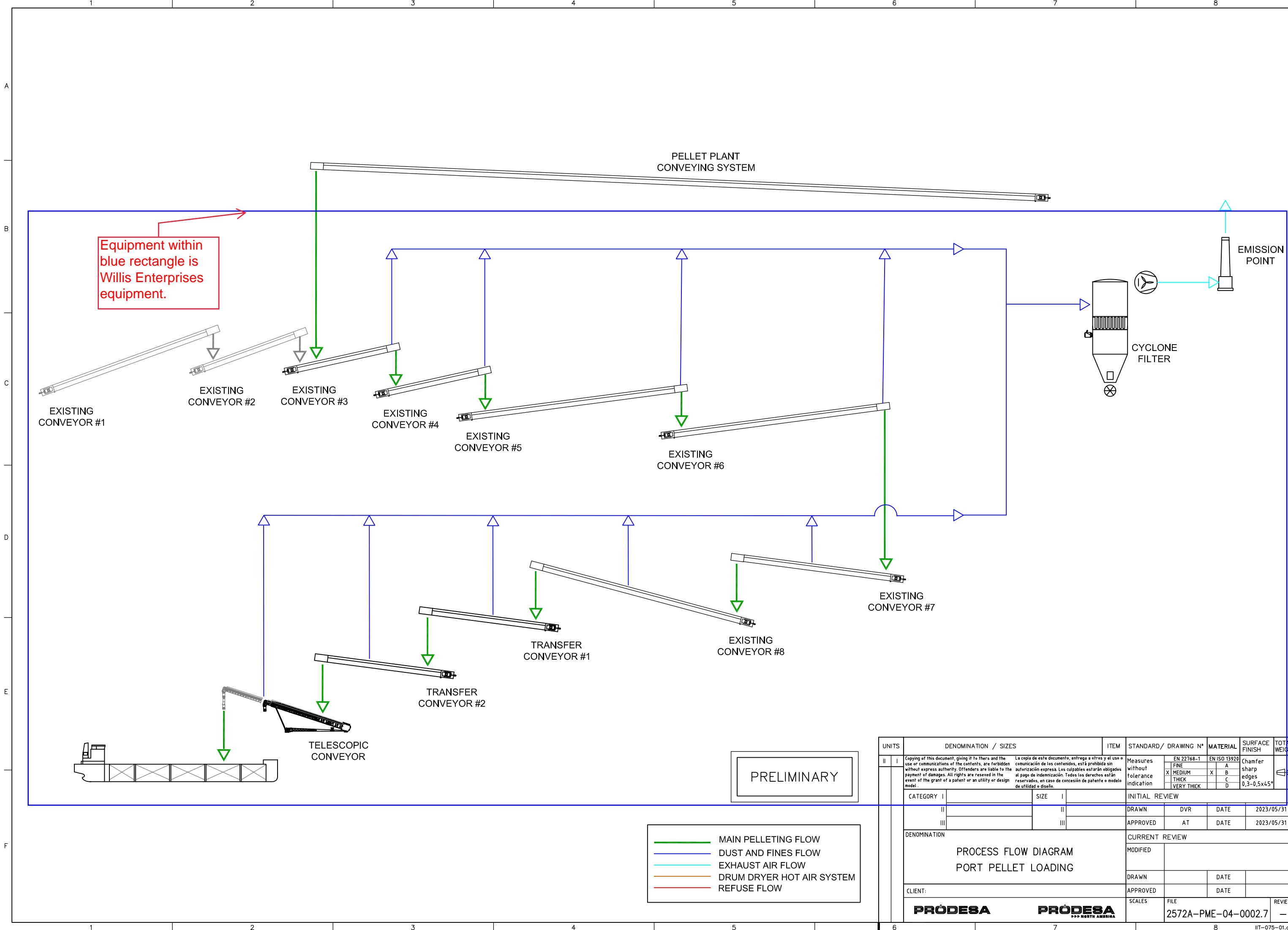
UNITS	DENOMINATION / SIZES	ITEM	STANDARD / DRAWING N°	MATERIAL	SURFACE FINISH	TOTAL WEIGHT
I	Copy of this document, giving its title and the use or communication of the contents, are forbidden without express authority. Offenders are liable to the payment of damages. All rights are reserved in the event of the grant of a patent or an utility or design model.	La copia de este documento, otorgado a quien y al uso o comunicación de los contenidos, está prohibida sin autorización expresa. Los culpables estarán obligados al pago de indemnización. Todos los derechos están reservados, en caso de concesión de patente o modelo de utilidad o diseño.				
II	MEASURES WITHOUT TOLERANCE INDICATION	EN 22768-1	EN ISO 19252	Chamfer	sharp edges	9,3-0,5x45°
III	SIZE					
CATEGORY I		INITIAL REVIEW				
II	DRAWN	DVR	DATE	2023/05/31		
III	APPROVED	AT	DATE	2023/05/31		
DENOMINATION		CURRENT REVIEW				
PROCESS FLOW DIAGRAM PELLETING LINE		MODIFIED				
CLIENT:		DRAWN	DATE			
APPROVED			DATE			
PRÓDESA		SCALES	FILE	2572A-PME-04-0002.5		
PRÓDESA						



PRELIMINARY

- MAIN PELLETING FLOW
- DUST AND FINES FLOW
- EXHAUST AIR FLOW
- DRUM DRYER HOT AIR SYSTEM
- REFUSE FLOW

UNITS	DENOMINATION / SIZES	ITEM	STANDARD / DRAWING N°	MATERIAL	SURFACE FINISH	TOTAL WEIGHT
II	I	Measure's without	EN 22768-1	EN ISO 19292	Chamfer	
	SIZE	INDICATION			sharp edges	
		VERY THICK			0,3-0,5x45°	
CATEGORY I		INITIAL REVIEW				
II	II	DRAWN	DVR	DATE	2023/05/31	
III	III	APPROVED	AT	DATE	2023/05/31	
DENOMINATION		CURRENT REVIEW				
PROCESS FLOW DIAGRAM		MODIFIED				
PELLET SILOS		DRAWN		DATE		
CLIENT:		APPROVED		DATE		
PRÓDESA		PRÓDESA		SCALES		
		FILE		2572A-PME-04-0002.6		
		REVIEW		-		



Equipment within blue rectangle is Willis Enterprises equipment.

PRELIMINARY

- MAIN PELLETING FLOW
- DUST AND FINES FLOW
- EXHAUST AIR FLOW
- DRUM DRYER HOT AIR SYSTEM
- REFUSE FLOW

UNITS	DENOMINATION / SIZES		ITEM	STANDARD / DRAWING N°	MATERIAL	SURFACE FINISH	TOTAL WEIGHT
II	I	Copying of this document, giving it to others and the use or communications of the contents, are forbidden without express authority. Offenders are liable to the payment of damages. All rights are reserved in the event of the grant of a patent or an utility or design model.		Measures without tolerance indication	EN 22768-1 FINE X MEDIUM THICK VERY THICK	EN ISO 13920 A B C D	Chamfer sharp edges 0,3-0,5x45°
CATEGORY I				INITIAL REVIEW			
II				DRAWN	DVR	DATE	2023/05/31
III				APPROVED	AT	DATE	2023/05/31
DENOMINATION				CURRENT REVIEW			
PROCESS FLOW DIAGRAM PORT PELLETT LOADING				MODIFIED			
				DRAWN		DATE	
CLIENT:				APPROVED		DATE	
PRÓDESA				SCALES	FILE	REVIEW	
					2572A-PME-04-0002.7	-	